



WINDER

INDUSTRIAL PARK

589 Loganville Highway | Winder, GA, 30680

CLASS A SHALLOW-BAY FACILITY

SPACE AVAILABLE 163,800 SF (Building A)

UPCOMING PHASES: 318,060 SF (Building B)
106,920 SF (Building C)

MIKE MARTIN
770.913.3929 | mmartin@ackermanco.net | ackermanco.com

HIGHLIGHTS

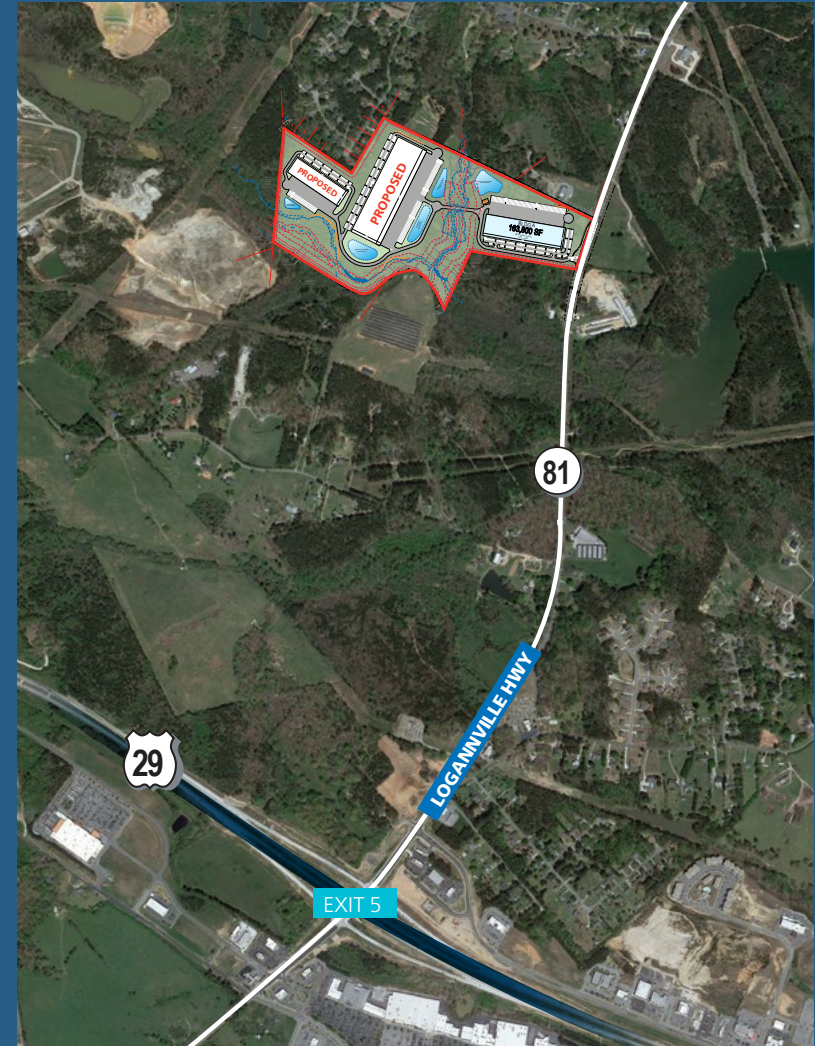
- 163,800 SF available
- 32' ceiling height
- 45 dock-high doors | 2 drive-in door
- 2,000 amp. 277/480 volt
- Ample parking - 183 auto spaces | 60 trailer spaces
- Option to subdivide
- Strategically positioned for regional distribution
- Conveniently located between U.S. Route 29 and I-85

Winder Industrial Park

Industrial Warehouse for Lease – 163,800 SF

589 Loganville Highway
Winder, GA 30680
South Barrow County

Building Type:	Shallow-bay warehouse rear load
Building Size:	163,800 SF
Available Space:	163,800 SF
Office:	Build-to-suit
Clear Height:	32'
Column Spacing:	52' x 50' bays
Dock(s):	45 dock-high doors 2 drive-in doors
Building Depth:	210
Building Length:	780'
Floor Slab:	6" Ductilcrete
Fire Sprinkler:	ESFR
Auto Parking:	183 spaces
Truck Court(s):	Shared 185' deep; 60' concrete apron
Roof:	R20; 45 mil white TPO, 15-year warranty
Exterior Construction:	Tilt-up exterior concrete wall construction



MIKE MARTIN
770.913.3929 | mmartin@ackermanco.net

Ackerman & Co.

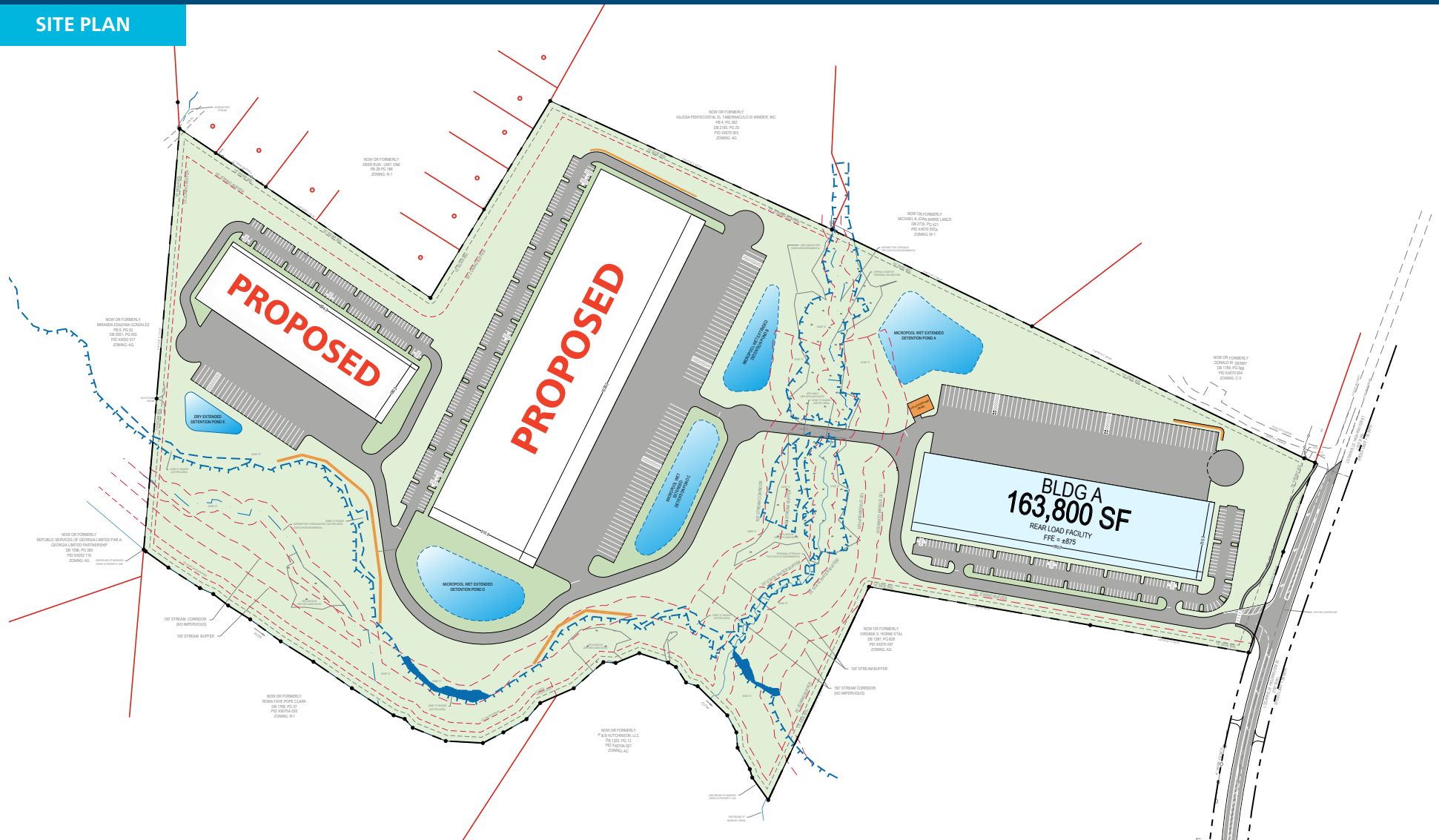
©2023 Ackerman & Co. All rights reserved. While we have no reason to doubt the accuracy of the information provided from sources we deem reliable, we cannot guarantee it and therefore assume no liability for errors, omissions or changes to this content.

Winder Industrial Park

Industrial Warehouse for Lease – 163,800 SF

589 Loganville Highway
Winder, GA 30680
South Barrow County

SITE PLAN



Ackerman & Co.

MIKE MARTIN
770.913.3929 | mmartin@ackermanco.net

©2023 Ackerman & Co. All rights reserved. While we have no reason to doubt the accuracy of the information provided from sources we deem reliable, we cannot guarantee it and therefore assume no liability for errors, omissions or changes to this content.

Winder Industrial Park

Industrial Warehouse for Lease – 163,800 SF

589 Loganville Highway
Winder, GA 30680
South Barrow County

NOTABLE DISTANCES

MAJOR ARTERIES / INTERSTATES

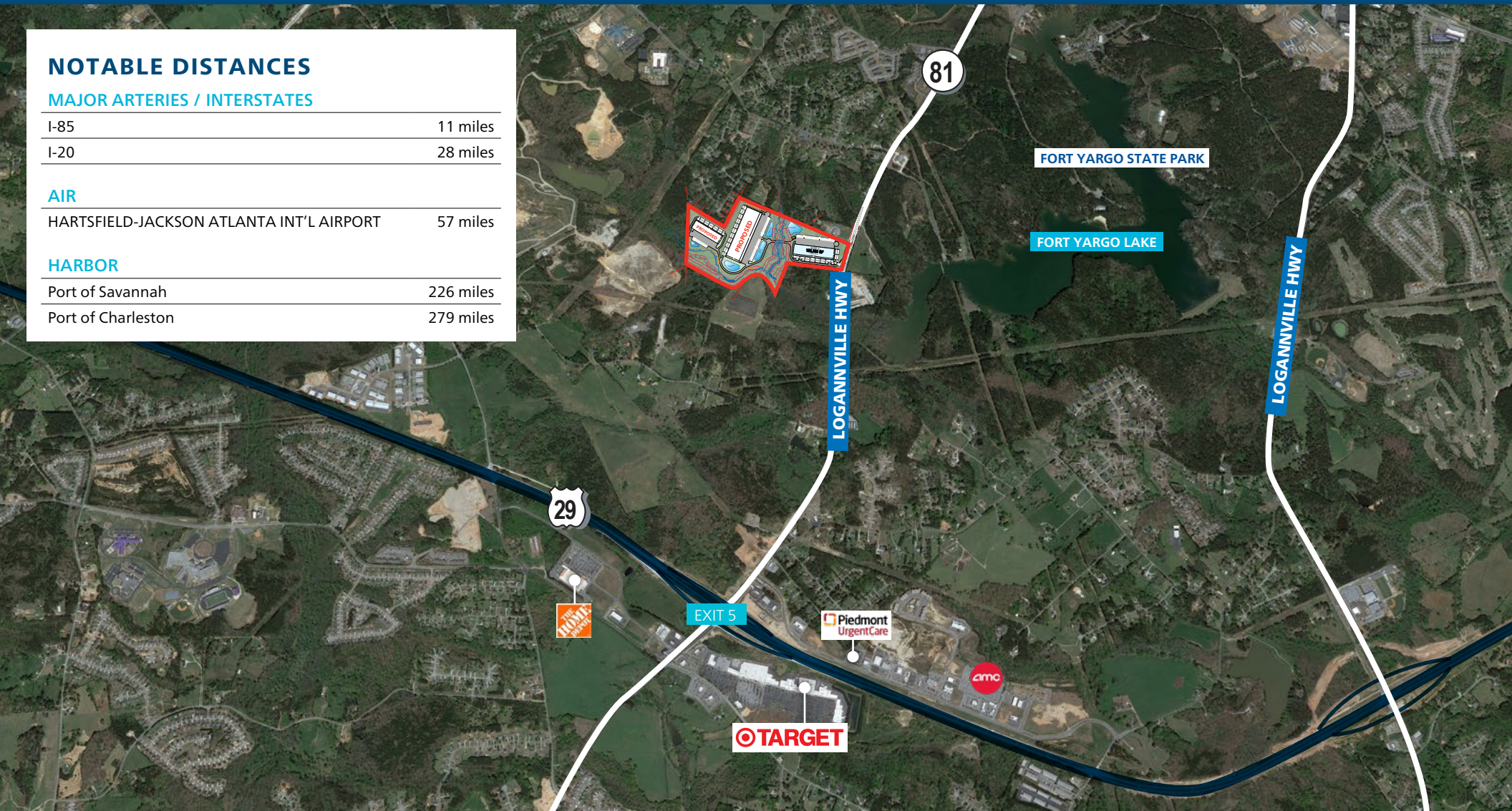
I-85	11 miles
I-20	28 miles

AIR

HARTSFIELD-JACKSON ATLANTA INT'L AIRPORT	57 miles
--	----------

HARBOR

Port of Savannah	226 miles
Port of Charleston	279 miles



Ackerman & Co.

MIKE MARTIN

770.913.3929 | mmartin@ackermanco.net

©2023 Ackerman & Co. All rights reserved. While we have no reason to doubt the accuracy of the information provided from sources we deem reliable, we cannot guarantee it and therefore assume no liability for errors, omissions or changes to this content.