

FOR  
LEASE



# 12610 - 12680 CRABAPPLE RD 1845 - 1935 HERITAGE WALK

Milton, GA 30004



## SPACE AVAILABLE

1,345 - 5,754 SF

### PROPERTY HIGHLIGHTS

- Lifestyle center located in the heart of Milton's Crabapple District
- Strong mix of boutiques, restaurants, retail, medical and office users
- Unique historic architectural style buildings, featuring 1st, 2nd, and 3rd floor availabilities
- Milton is one of the highest income areas in Metro Atlanta, with an average household income of over \$220,000 within 3 miles

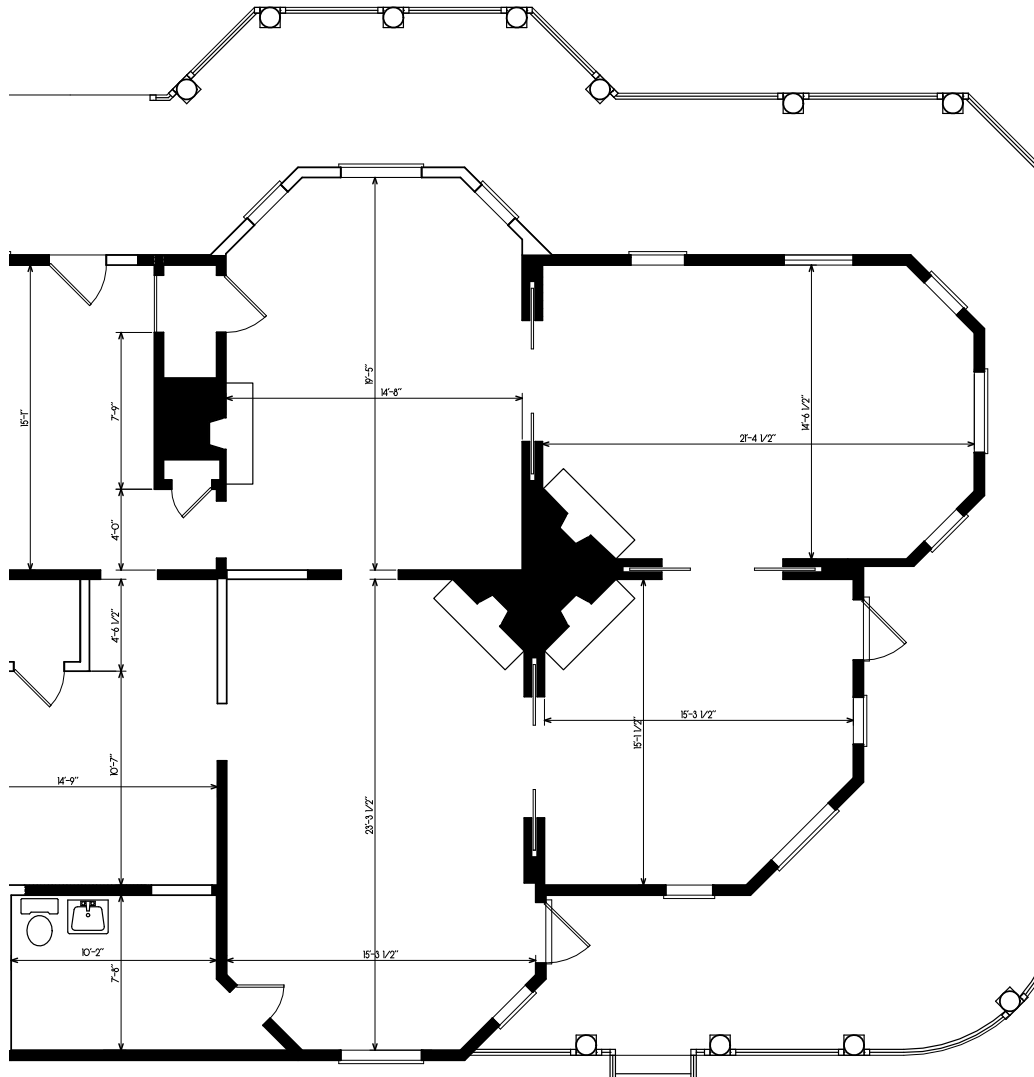


COURTNEY BRUMBELOW

P: 770.913.3905

E: [cbrumbelow@ackermanco.net](mailto:cbrumbelow@ackermanco.net)

Ackerman Retail  
A DIVISION OF ACKERMAN & CO



## 12680 CRABAPPLE ROAD - FARMHOUSE

STE	TENANT	SF
A-100	INDIGO HOME & APPAREL	2,000



## Ackerman Retail

COURTNEY BRUMBELOW

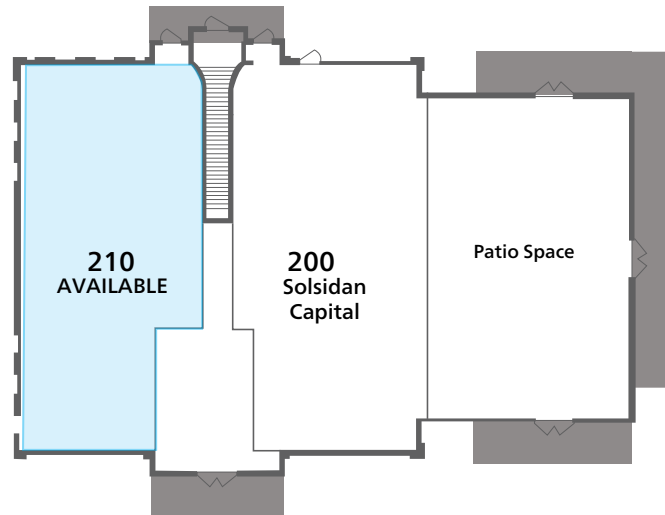
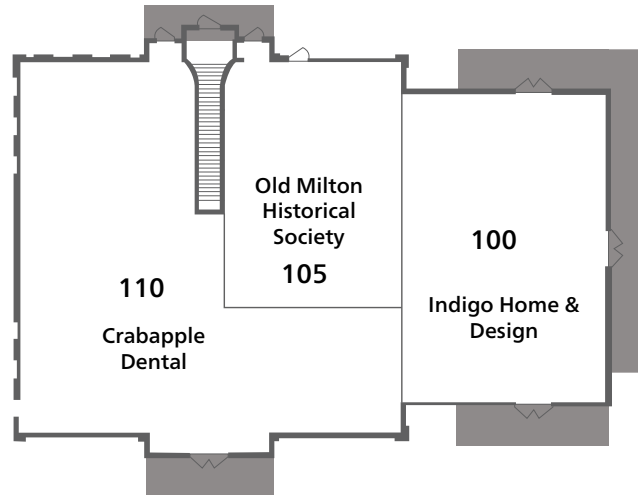
P: 770.913.3905

E: cbrumbelow@ackermanco.net

©2023 Ackerman & Co. All rights reserved. While we have no reason to doubt the accuracy of the information provided from sources we deem reliable, we cannot guarantee it and therefore assume no liability for errors, omissions or changes to this content. Sources include CoStar, SitesUSA, ESRI, and Georgia DOT.

**12670 CRABAPPLE ROAD - BUILDING A**

STE	TENANT	SF
A-100	INDIGO HOME & DESIGN	2,284
A-105	MILTON HISTORICAL SOCIETY	990
A-110	CRABAPPLE DENTAL	2,937
A-200	SOLSIDAN CAPITAL	1,750
A-210	AVAILABLE (OFFICE)	2,350



## Ackerman Retail

**COURTNEY BRUMBELOW**

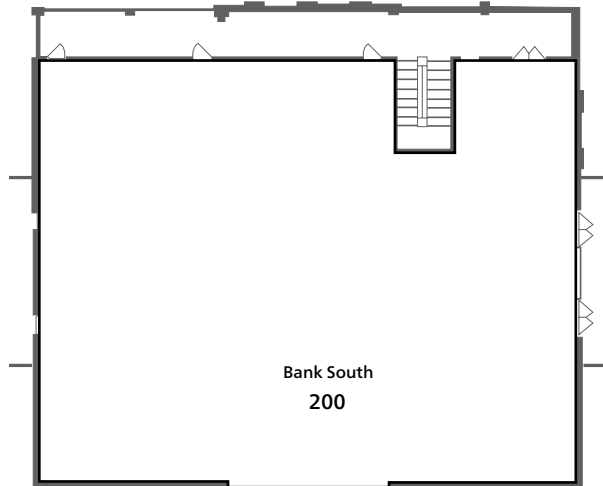
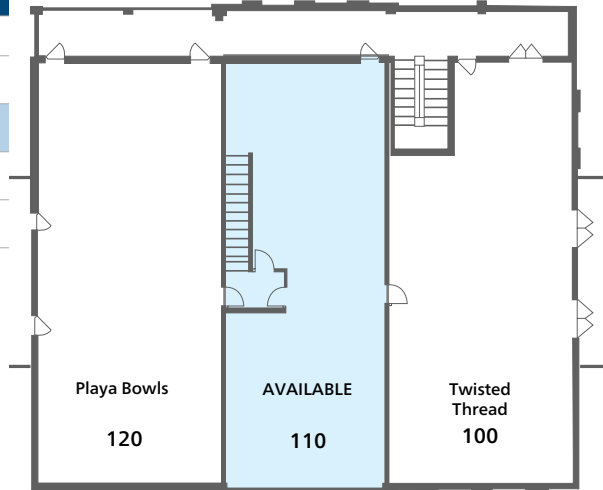
P: 770.913.3905

E: cbrumbelow@ackermanco.net

©2023 Ackerman & Co. All rights reserved. While we have no reason to doubt the accuracy of the information provided from sources we deem reliable, we cannot guarantee it and therefore assume no liability for errors, omissions or changes to this content. Sources include CoStar, SitesUSA, ESRI, and Georgia DOT.

**12660 CRABAPPLE ROAD - BUILDING B**

STE	TENANT	SF
B-100	TWISTED THREAD	1,800
B-110	AVAILABLE	1,457
B-120	PLAYA BOWLS	2,067
B-200	BANK SOUTH	6,000



## Ackerman Retail

**COURTNEY BRUMBELOW**

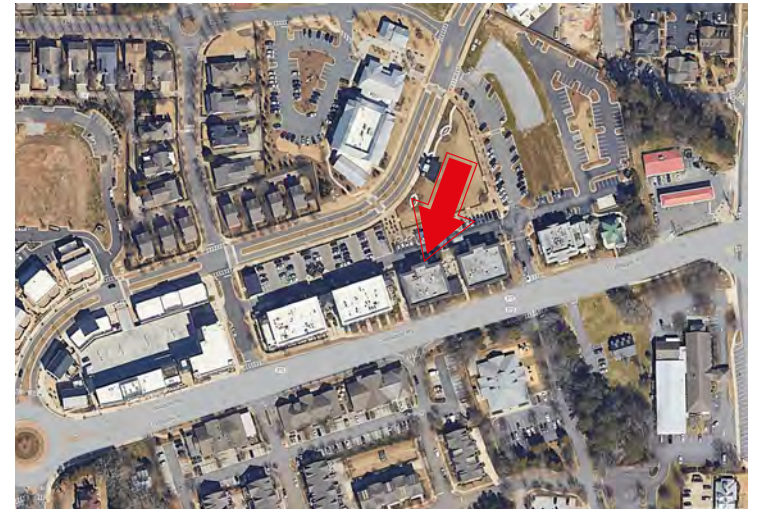
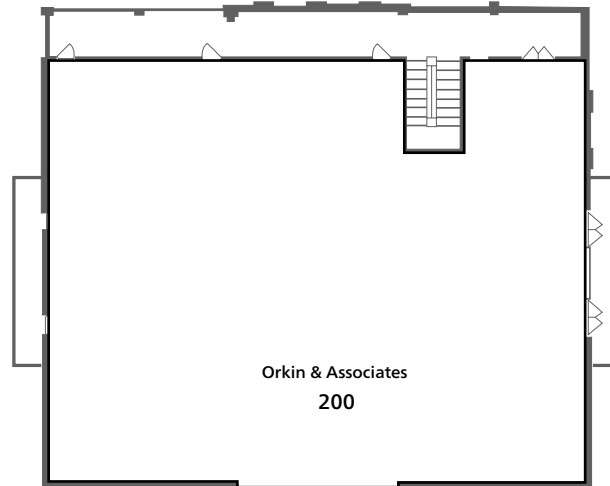
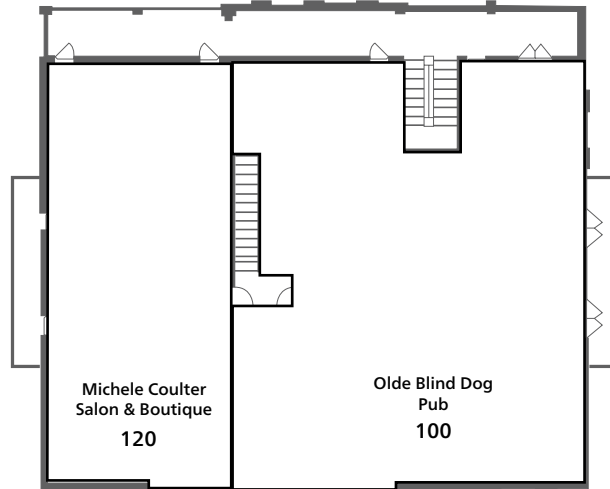
P: 770.913.3905

E: cbrumbelow@ackermanco.net

©2023 Ackerman & Co. All rights reserved. While we have no reason to doubt the accuracy of the information provided from sources we deem reliable, we cannot guarantee it and therefore assume no liability for errors, omissions or changes to this content. Sources include CoStar, SitesUSA, ESRI, and Georgia DOT.

**12650 CRABAPPLE ROAD - BUILDING C**

STE	TENANT	SF
C-100	OLDE BLIND DOG IRISH PUB	3,855
C-120	MICHELE COULTER SALON & BOUTIQUE	2,000
C-200	ORKIN	5,925



## Ackerman Retail

**COURTNEY BRUMBELOW**

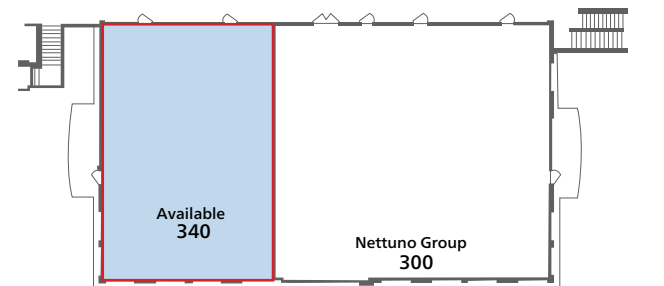
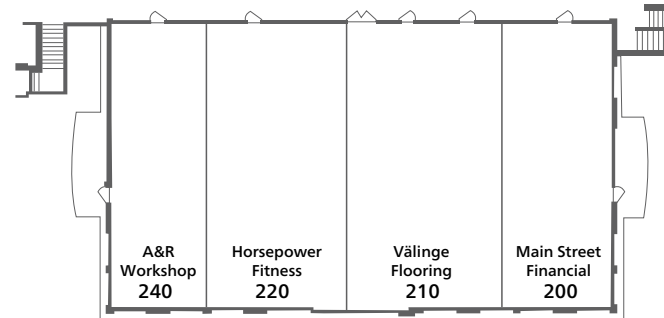
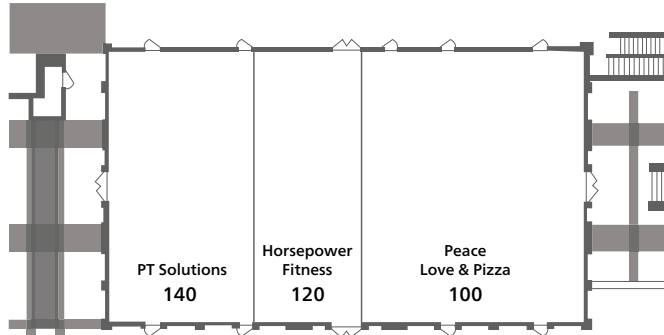
P: 770.913.3905

E: cbrumbelow@ackermanco.net

©2023 Ackerman & Co. All rights reserved. While we have no reason to doubt the accuracy of the information provided from sources we deem reliable, we cannot guarantee it and therefore assume no liability for errors, omissions or changes to this content. Sources include CoStar, SitesUSA, ESRI, and Georgia DOT.

## 12640 CRABAPPLE ROAD - BUILDING D

STE	TENANT	SF
D-100	PEACE LOVE PIZZA	2,720
D-120/220	HORSEPOWER FITNESS	2,808
D-140	PT SOLUTIONS	2,000
D-200	MAINSTREET FINANCIAL	1,368
D-210	VALINE FLOORING	1,902
D-240	A&R WORKSHOP	1,390
D-300	NETTUMO GROUP	3,800
D-340	AVAILABLE	2,400



## Ackerman Retail

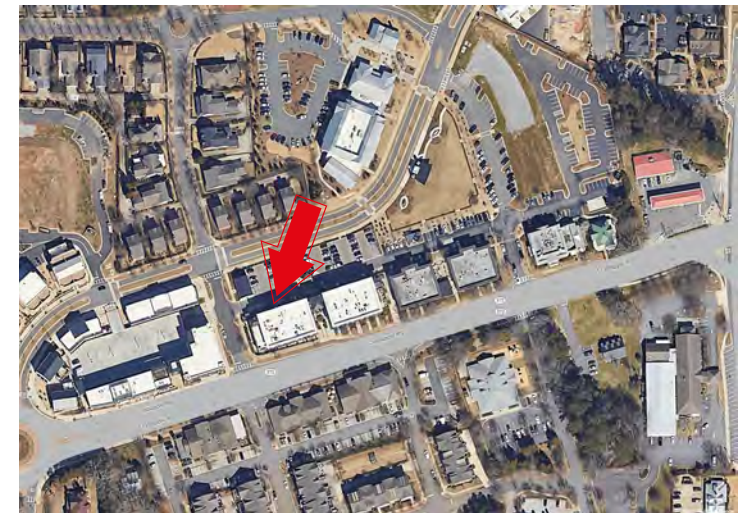
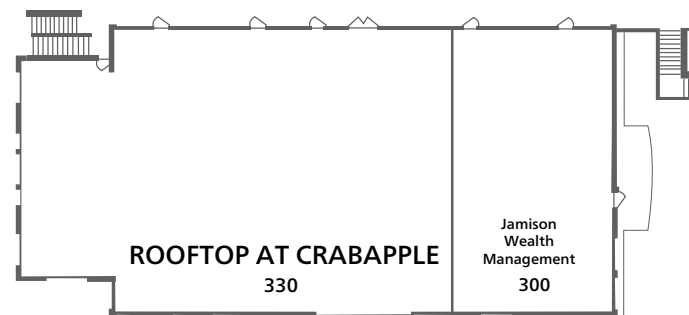
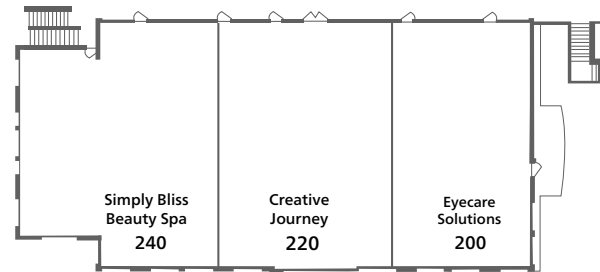
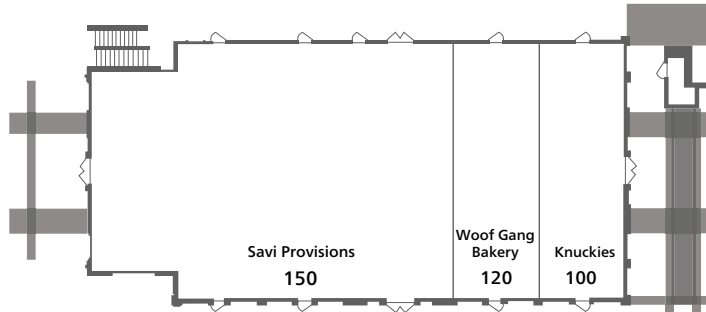
COURTNEY BRUMBELOW

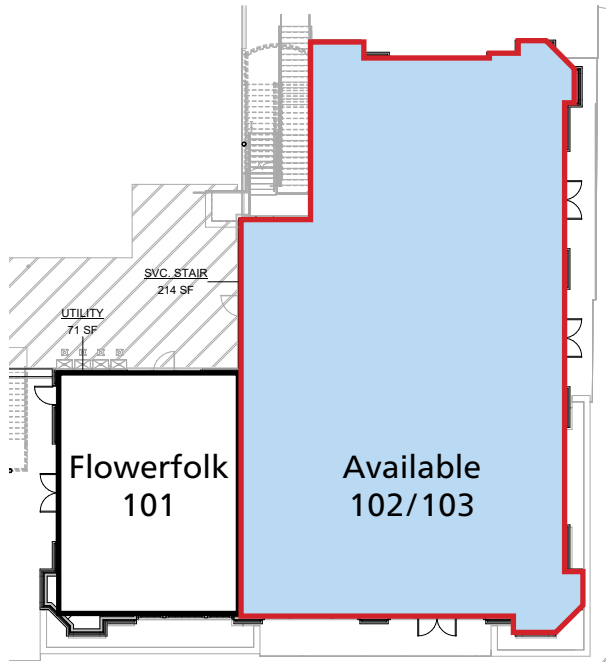
P: 770.913.3905

E: cbrumbelow@ackermanco.net

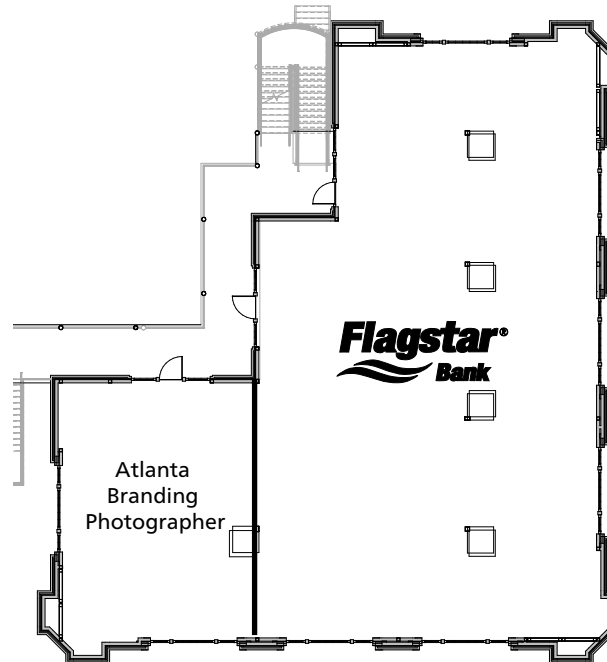
**12630 CRABAPPLE ROAD - BUILDING E**

STE	TENANT	SF
E-100	GNUCKIES	1,250
E-120	WOOF GANG BAKERY	1,200
E-150	SAVI PROVISIONS	4,627
E-200	EYECARE SOLUTIONS	2,000
E-220	CREATIVE JOURNEY STUDIOS	2,500
E-240	SIMPLY BLISS BEAUTY SPA	2,820
E-300/320	JAMISON WEALTH MANAGEMENT	3,140
E-330	ROOFTOP AT CRABAPPLE MARKET	2,895

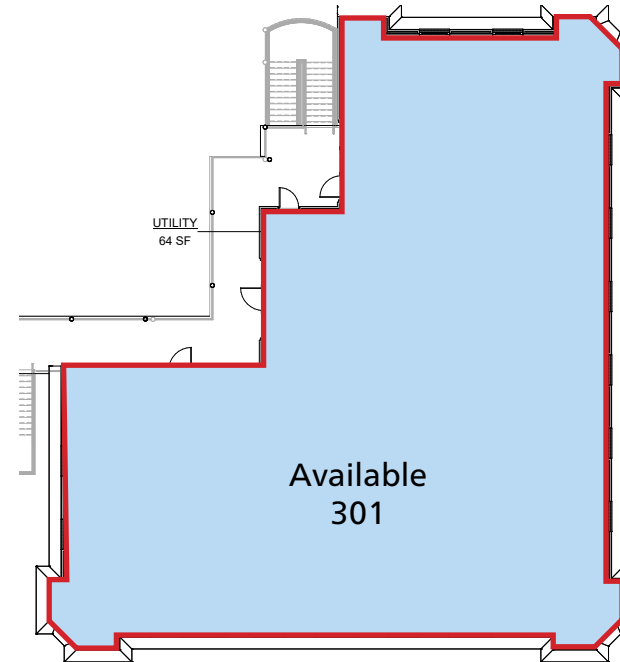




Ground Floor



Second Floor



Third Floor

**12620 CRABAPPLE ROAD - BUILDING F**

STE	TENANT	SF
F-101	FLOWERFOLK	1,167
F-102/103	AVAILABLE (RESTAURANT)	4,922
F-201	ATLANTA BRANDING PHOTOGRAPHER	1,225
F-210	FLAGSTAR BANK	4,211
F-301	AVAILABLE (OFFICE)	5,754



## Ackerman Retail

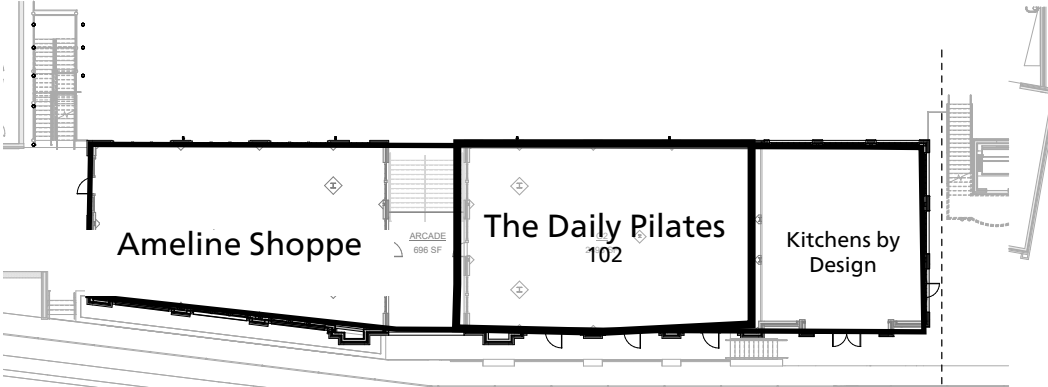
**COURTNEY BRUMBLOW**

P: 770.913.3905

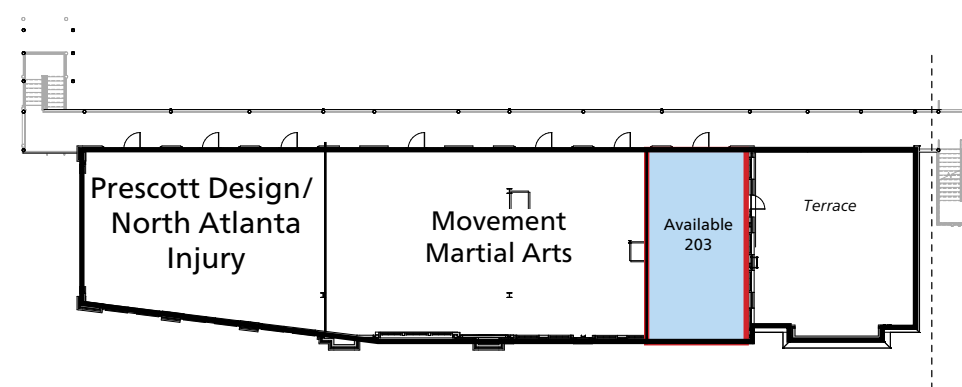
E: cbrumbelow@ackermanco.net



Ground Floor



Second Floor



**12610 CRABAPPLE ROAD - BUILDING G**

STE	TENANT	SF
G-101	AMELINE SHOPPE	2,210
G-102	THE DAILY PILATES	2,493
G-103	KITCHENS BY DESIGN	1,388
G-201	PRESCOTT DESIGN/ NORTH ATLANTA INJURY	1,700
G-202	MOVEMENT MARTIAL ARTS	2,244
G-203	AVAILABLE (OFFICE)	1,345

## Ackerman Retail

COURTNEY BRUMBELOW

P: 770.913.3905

E: cbrumbelow@ackermanco.net

**1845 HERITAGE WALK - BUILDING H**

STE	TENANT	SF
H-100	THE NEST CAFÉ	2,083

**1865 HERITAGE WALK - BUILDING I**

STE	TENANT	SF
I-100	AVAILABLE	2,828

**1885 HERITAGE WALK - BUILDING J**

STE	TENANT	SF
J-100	WHITETAIL BICYCLE	2,910

**1935 HERITAGE WALK - BUILDING K**

STE	TENANT	SF
K-100	RESTO L'ANTOINETTE	2,488
K-110	ALUMNI COOKIE DOUGH	814
K-120/130	REESHA BARBERSHOP	2,522



## Ackerman Retail

**COURTNEY BRUMBLOW**

P: 770.913.3905

E: cbrumbelow@ackermanco.net

### 1850 HERITAGE WALK - BUILDING L

STE	TENANT	SF
L-100	SIX BRIDGES BREWING	1,580

### 1850B HERITAGE WALK - BUILDING M

STE	TENANT	SF
M-100	SPICED RIGHT RIB HOUSE	2,037

### 1870 HERITAGE WALK - BUILDING N

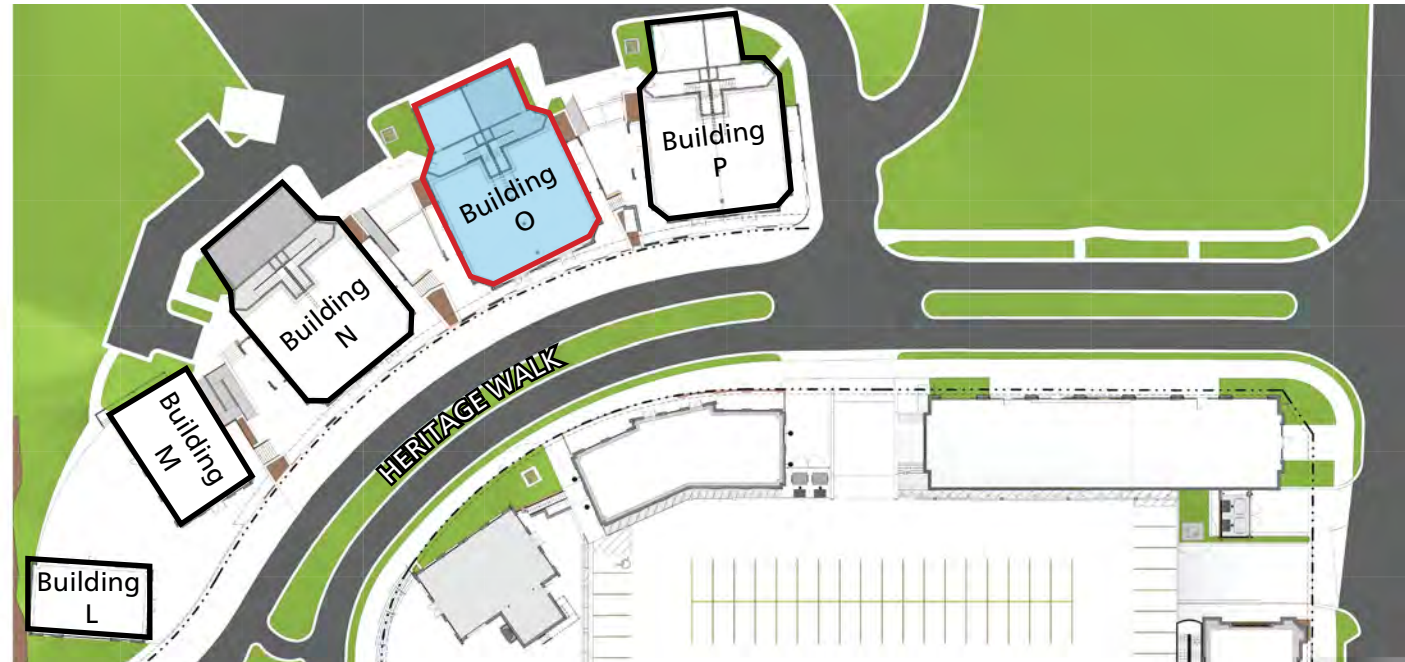
STE	TENANT	SF
N-100	DINNA ECKSTEIN DESIGN STUDIO	3,063

### 1880 HERITAGE WALK - BUILDING O

STE	TENANT	SF
O-100	AVAILABLE	3,026

### 1890 HERITAGE WALK - BUILDING P

STE	TENANT	SF
P-101	POE & COMPANY BOOKSTORE	1,570
P-102	EVIMERO MARKETPLACE	1,570



## Ackerman Retail

COURTNEY BRUMBELOW

P: 770.913.3905

E: cbrumbelow@ackermanco.net

©2023 Ackerman & Co. All rights reserved. While we have no reason to doubt the accuracy of the information provided from sources we deem reliable, we cannot guarantee it and therefore assume no liability for errors, omissions or changes to this content. Sources include CoStar, SitesUSA, ESRI, and Georgia DOT.

**AREA DEMOGRAPHICS (2023):**

	1-MILE	3-MILE	5-MILE
<b>POPULATION</b>	6,752	42,934	125,872
<b>HOUSEHOLDS</b>	2,227	15,313	47,968
<b>AVG HH INCOME</b>	\$241,270	\$229,247	\$195,669



**NORTHWESTERN MIDDLE SCHOOL**  
1,192 STUDENTS

**CRABAPPLE CROSSING ELEMENTARY**  
640 STUDENTS

**CRABAPPLE MARKET**

**19,200 VPD**

**4,050 VPD**



# 12610 - 12680 CRABAPPLE RD 1845 - 1935 HERITAGE WALK

Milton, GA 30004



COURTNEY BRUMBELOW

P: 770.913.3905

E: [cbrumbelow@ackermanco.net](mailto:cbrumbelow@ackermanco.net)

Ackerman Retail  
A DIVISION OF ACKERMAN & CO



## Ackerman Retail

**COURTNEY BRUMBELOW**

P: 770.913.3905

E: [cbrumbelow@ackermanco.net](mailto:cbrumbelow@ackermanco.net)

©2023 Ackerman & Co. All rights reserved. While we have no reason to doubt the accuracy of the information provided from sources we deem reliable, we cannot guarantee it and therefore assume no liability for errors, omissions or changes to this content. Sources include CoStar, SitesUSA, ESRI, and Georgia DOT.



## Ackerman Retail

**COURTNEY BRUMBELLOW**

P: 770.913.3905

E: [cbrumbelow@ackermanco.net](mailto:cbrumbelow@ackermanco.net)

©2023 Ackerman & Co. All rights reserved. While we have no reason to doubt the accuracy of the information provided from sources we deem reliable, we cannot guarantee it and therefore assume no liability for errors, omissions or changes to this content. Sources include CoStar, SitesUSA, ESRI, and Georgia DOT.