

FOR
LEASE



12610 - 12680 CRABAPPLE RD 1845 - 1935 HERITAGE WALK

Milton, GA 30004

SPACE AVAILABLE

1,167 - 5,754 SF

PROPERTY HIGHLIGHTS

- Lifestyle center located in the heart of Milton's Crabapple District
- Strong mix of boutiques, restaurants, retail, medical and office users
- Unique historic architectural style buildings, featuring 1st, 2nd, and 3rd floor availabilities
- Milton is one of the highest income areas in Metro Atlanta, with an average household income of over \$220,000 within 3 miles

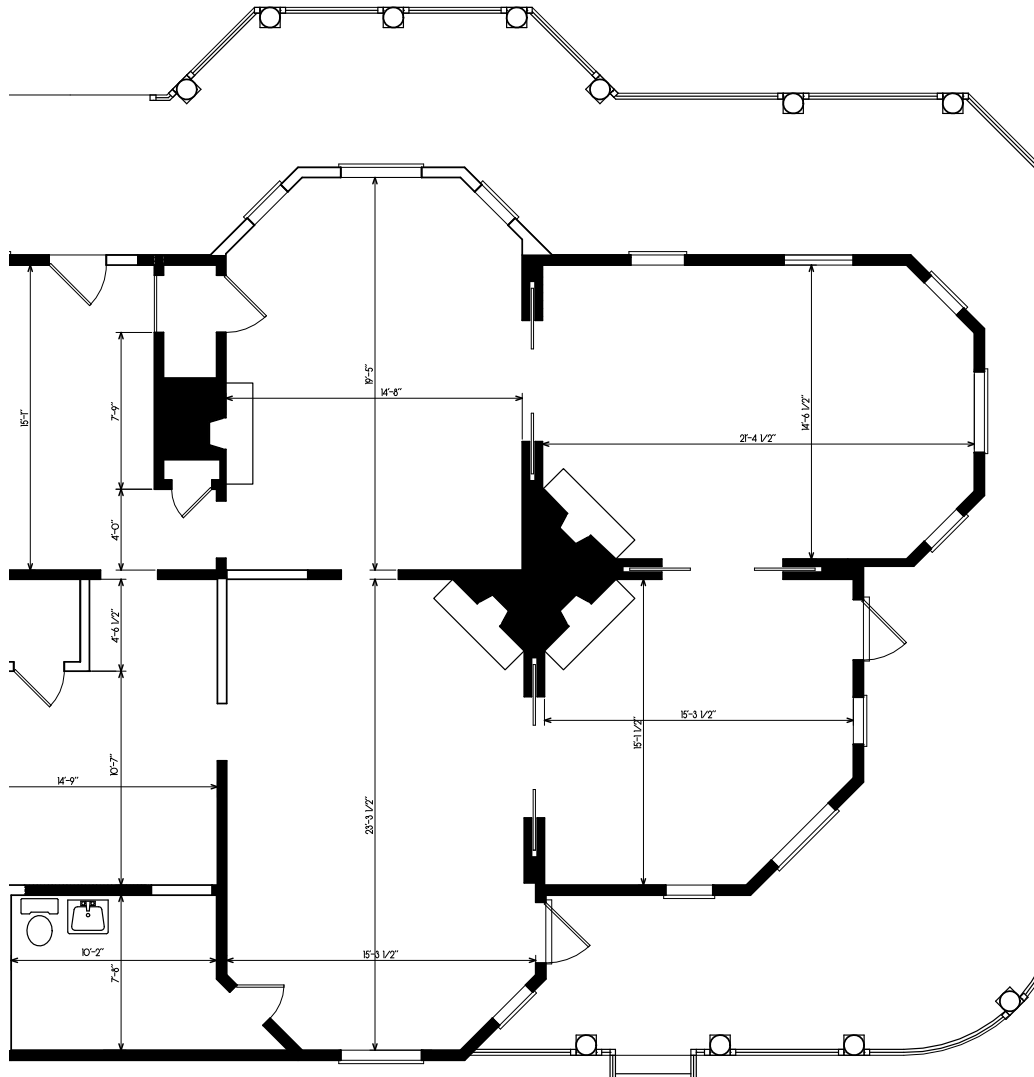


COURTNEY BRUMBELOW

P: 770.913.3905

E: cbrumbelow@ackermanco.net

Ackerman Retail
A DIVISION OF ACKERMAN & CO



12680 CRABAPPLE ROAD - FARMHOUSE

STE	TENANT	SF
A-100	INDIGO HOME & APPAREL	2,000



Ackerman Retail

COURTNEY BRUMBELOW

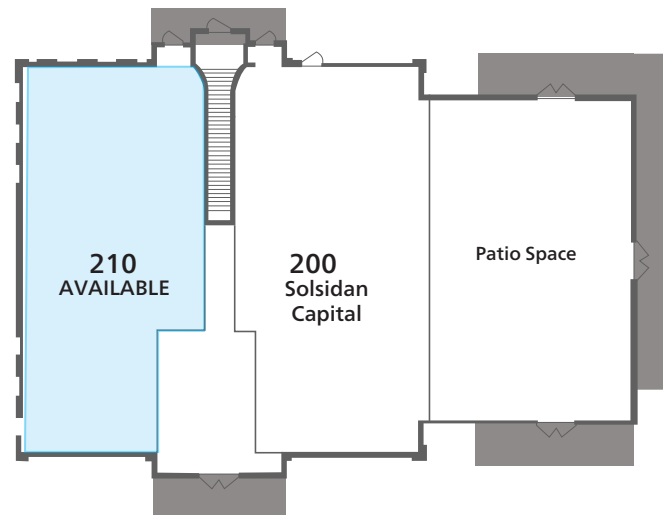
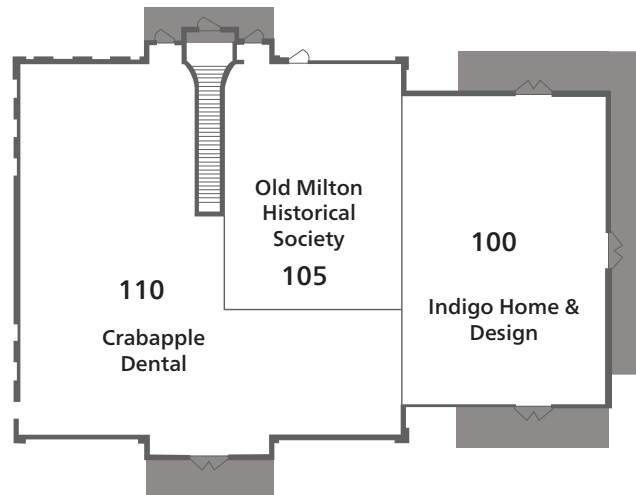
P: 770.913.3905

E: cbrumbelow@ackermanco.net

©2023 Ackerman & Co. All rights reserved. While we have no reason to doubt the accuracy of the information provided from sources we deem reliable, we cannot guarantee it and therefore assume no liability for errors, omissions or changes to this content. Sources include CoStar, SitesUSA, ESRI, and Georgia DOT.

12670 CRABAPPLE ROAD - BUILDING A

STE	TENANT	SF
A-100	INDIGO HOME & DESIGN	2,284
A-105	MILTON HISTORICAL SOCIETY	990
A-110	CRABAPPLE DENTAL	2,937
A-200	SOLSIDAN CAPITAL	1,750
A-210	AVAILABLE (OFFICE)	2,350



Ackerman Retail

COURTNEY BRUMBELOW

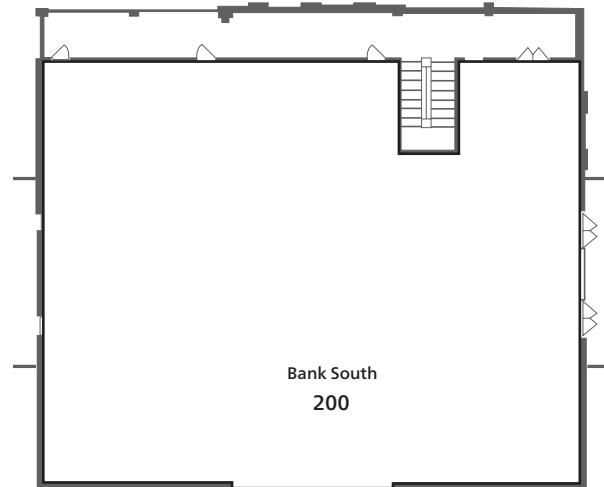
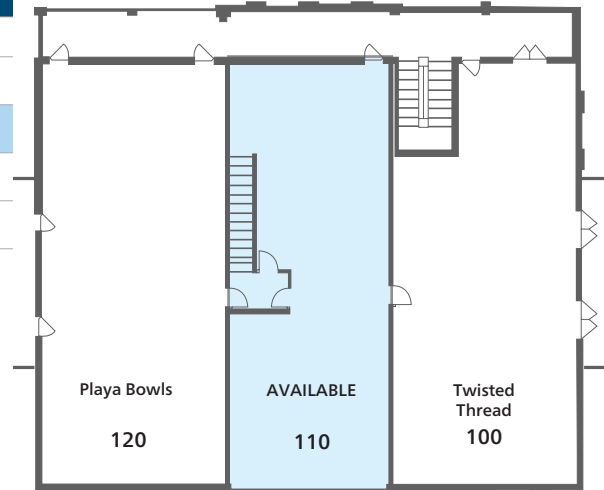
P: 770.913.3905

E: cbrumbelow@ackermanco.net

©2023 Ackerman & Co. All rights reserved. While we have no reason to doubt the accuracy of the information provided from sources we deem reliable, we cannot guarantee it and therefore assume no liability for errors, omissions or changes to this content. Sources include CoStar, SitesUSA, ESRI, and Georgia DOT.

12660 CRABAPPLE ROAD - BUILDING B

STE	TENANT	SF
B-100	TWISTED THREAD	1,800
B-110	AVAILABLE	1,457
B-120	PLAYA BOWLS	2,067
B-200	BANK SOUTH	6,000



Ackerman Retail

COURTNEY BRUMBELOW

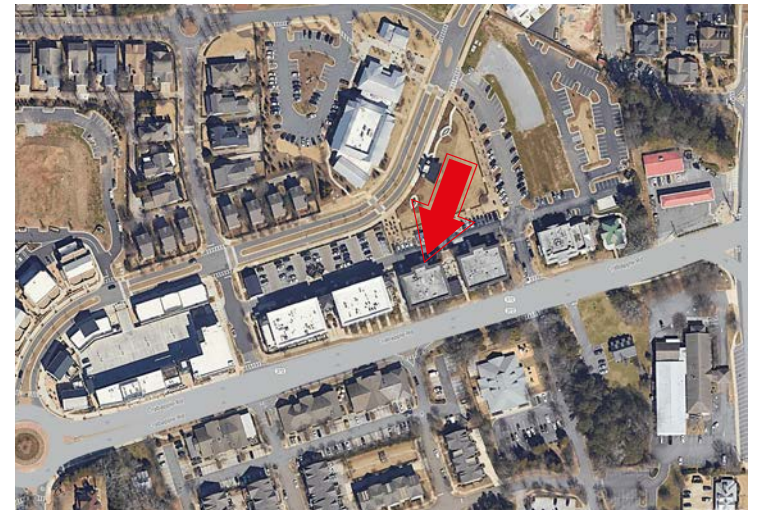
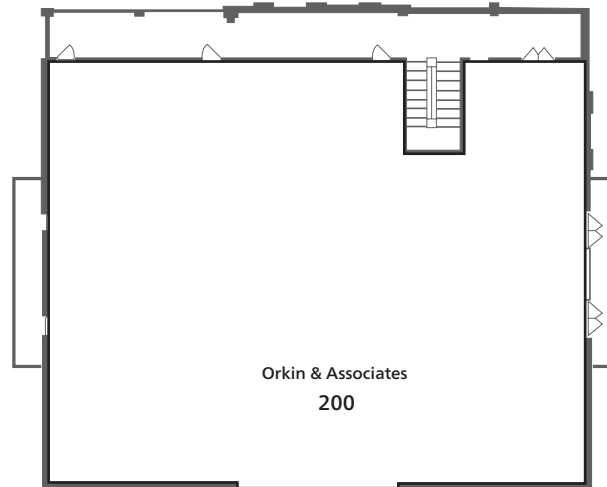
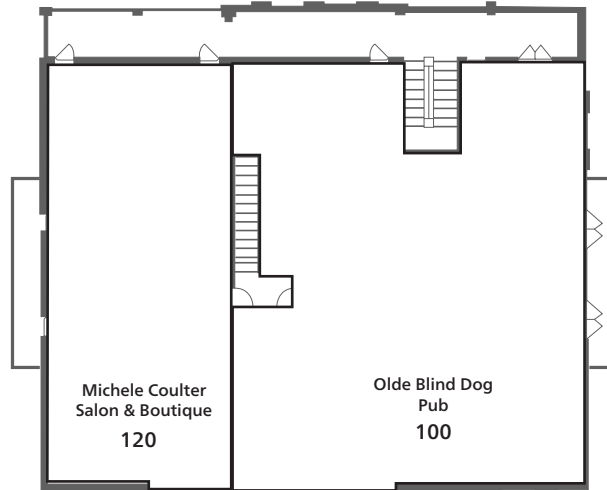
P: 770.913.3905

E: cbrumbelow@ackermanco.net

©2023 Ackerman & Co. All rights reserved. While we have no reason to doubt the accuracy of the information provided from sources we deem reliable, we cannot guarantee it and therefore assume no liability for errors, omissions or changes to this content. Sources include CoStar, SitesUSA, ESRI, and Georgia DOT.

12650 CRABAPPLE ROAD - BUILDING C

STE	TENANT	SF
C-100	OLDE BLIND DOG IRISH PUB	3,855
C-120	MICHELE COULTER SALON & BOUTIQUE	2,000
C-200	ORKIN	5,925



Ackerman Retail

COURTNEY BRUMBELOW

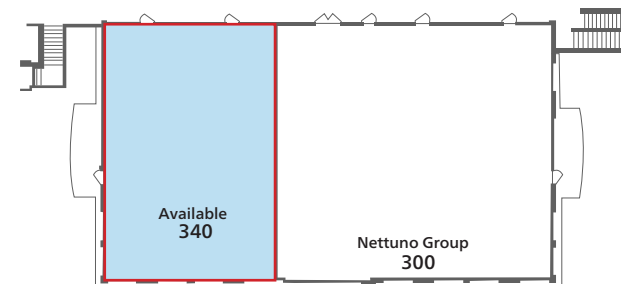
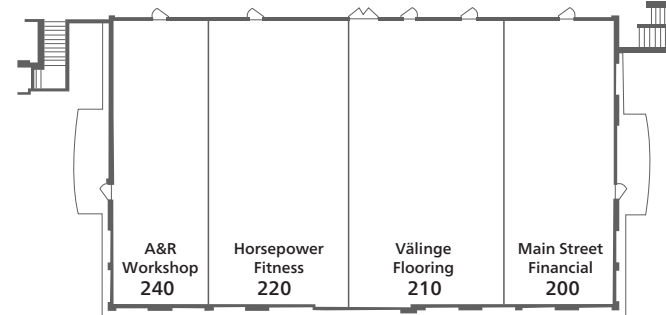
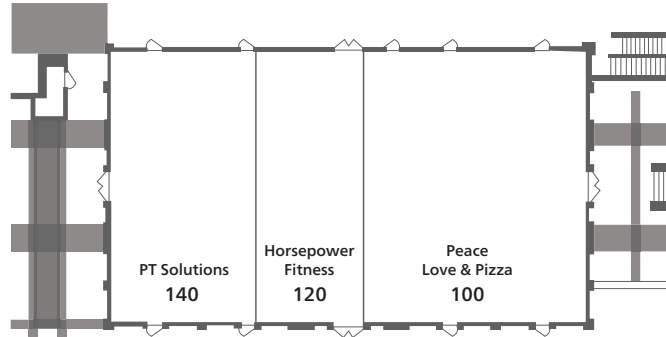
P: 770.913.3905

E: cbrumbelow@ackermanco.net

©2023 Ackerman & Co. All rights reserved. While we have no reason to doubt the accuracy of the information provided from sources we deem reliable, we cannot guarantee it and therefore assume no liability for errors, omissions or changes to this content. Sources include CoStar, SitesUSA, ESRI, and Georgia DOT.

12640 CRABAPPLE ROAD - BUILDING D

STE	TENANT	SF
D-100	PEACE LOVE PIZZA	2,720
D-120/220	HORSEPOWER FITNESS	2,808
D-140	PT SOLUTIONS	2,000
D-200	MAINSTREET FINANCIAL	1,368
D-210	VALINE FLOORING	1,902
D-240	A&R WORKSHOP	1,390
D-300	NETTUMO GROUP	3,800
D-340	AVAILABLE	2,400



Ackerman Retail

COURTNEY BRUMBELOW

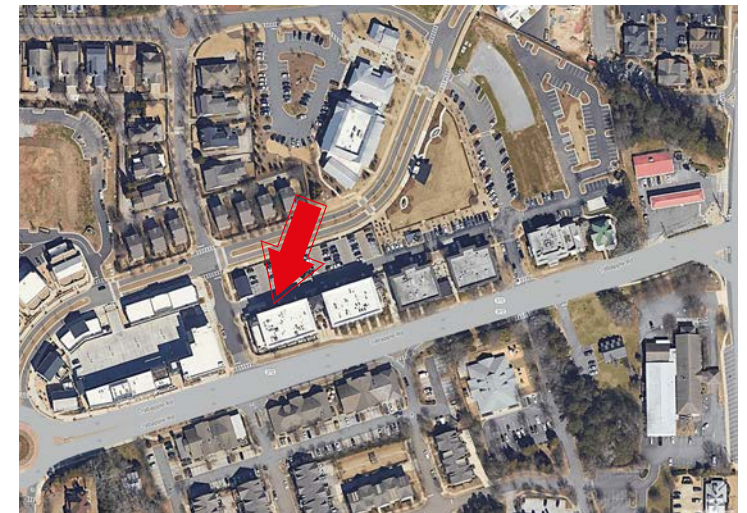
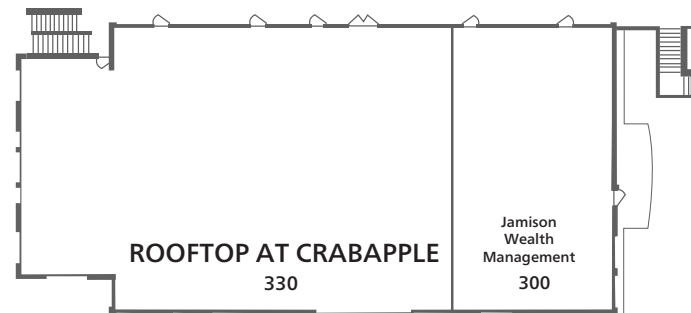
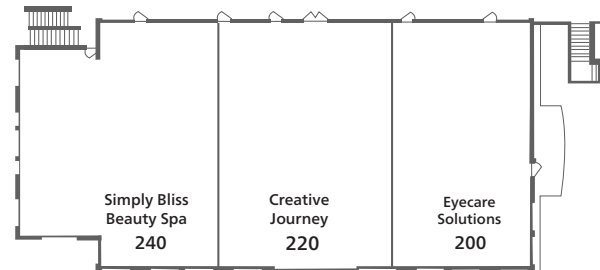
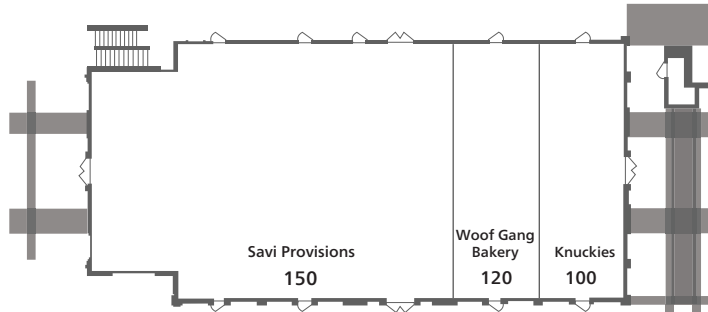
P: 770.913.3905

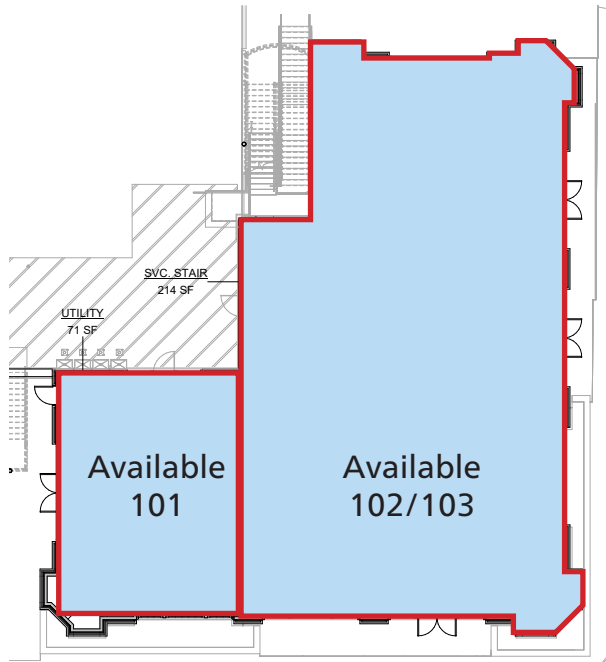
E: cbrumbelow@ackermanco.net

©2023 Ackerman & Co. All rights reserved. While we have no reason to doubt the accuracy of the information provided from sources we deem reliable, we cannot guarantee it and therefore assume no liability for errors, omissions or changes to this content. Sources include CoStar, SitesUSA, ESRI, and Georgia DOT.

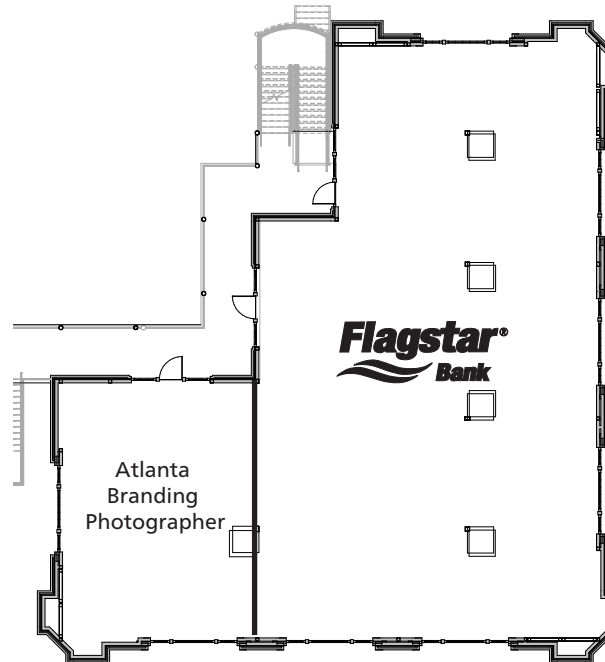
12630 CRABAPPLE ROAD - BUILDING E

STE	TENANT	SF
E-100	KNUCKIES	1,250
E-120	WOOF GANG BAKERY	1,200
E-150	SAVI PROVISIONS	4,627
E-200	EYECARE SOLUTIONS	2,000
E-220	CREATIVE JOURNEY STUDIOS	2,500
E-240	SIMPLY BLISS BEAUTY SPA	2,820
E-300/320	JAMISON WEALTH MANAGEMENT	3,140
E-330	ROOFTOP AT CRABAPPLE MARKET	2,895

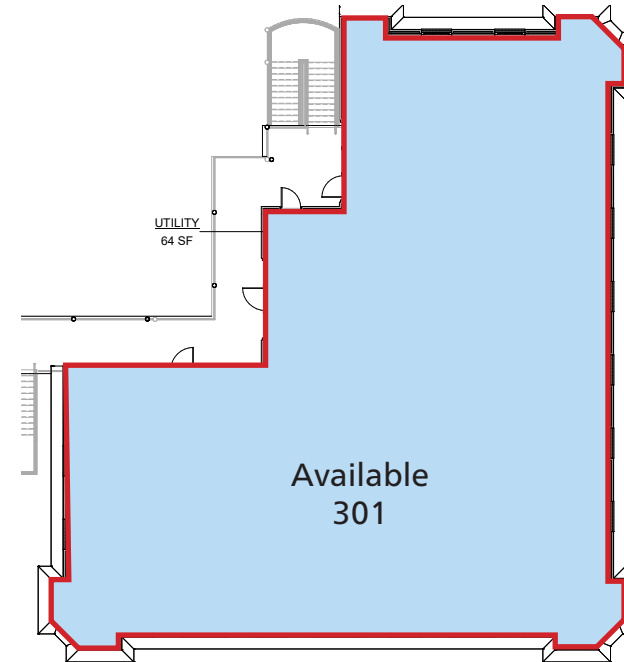




Ground Floor



Second Floor



Third Floor

12620 CRABAPPLE ROAD - BUILDING F

STE	TENANT	SF
F-101	AVAILABLE (RETAIL)	1,167
F-102/103	AVAILABLE (RESTAURANT)	4,922
F-201	ATLANTA BRANDING PHOTOGRAPHER	1,225
F-210	FLAGSTAR BANK	4,211
F-301	AVAILABLE (OFFICE)	5,754



Ackerman Retail

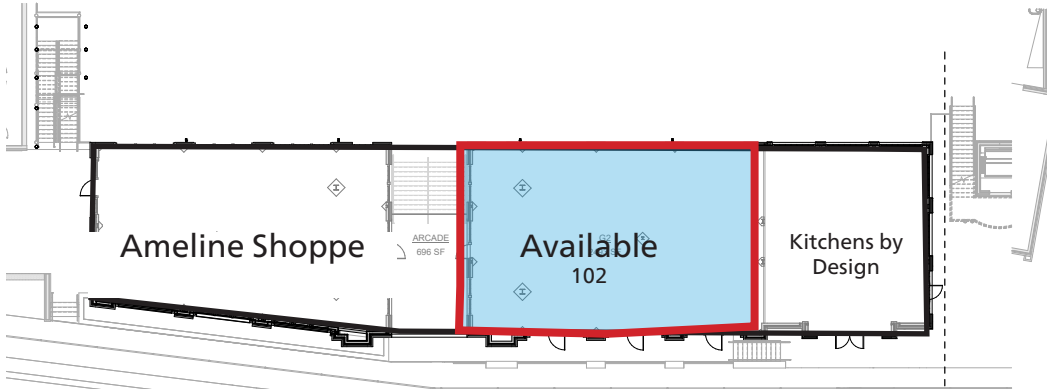
COURTNEY BRUMBELOW

P: 770.913.3905

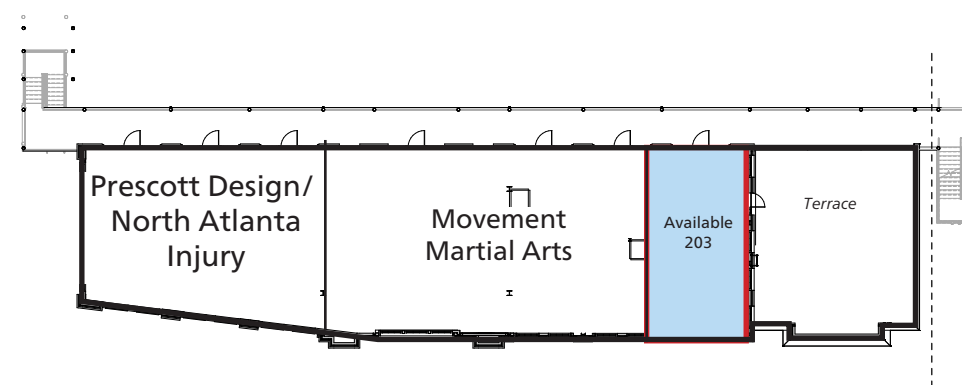
E: cbrumbelow@ackermanco.net

©2023 Ackerman & Co. All rights reserved. While we have no reason to doubt the accuracy of the information provided from sources we deem reliable, we cannot guarantee it and therefore assume no liability for errors, omissions or changes to this content. Sources include CoStar, SitesUSA, ESRI, and Georgia DOT.

Ground Floor



Second Floor



12610 CRABAPPLE ROAD - BUILDING G

STE	TENANT	SF
G-101	AMELINE SHOPPE	2,210
G-102	AVAILABLE	2,493
G-103	KITCHENS BY DESIGN	1,388
G-201	PRESCOTT DESIGN/ NORTH ATLANTA INJURY	1,700
G-202	MOVEMENT MARTIAL ARTS	2,244
G-203	AVAILABLE (OFFICE)	1,345

Ackerman Retail

COURTNEY BRUMBELOW

P: 770.913.3905

E: cbrumbelow@ackermanco.net

©2023 Ackerman & Co. All rights reserved. While we have no reason to doubt the accuracy of the information provided from sources we deem reliable, we cannot guarantee it and therefore assume no liability for errors, omissions or changes to this content. Sources include CoStar, SitesUSA, ESRI, and Georgia DOT.

1845 HERITAGE WALK - BUILDING H

STE	TENANT	SF
H-100	THE NEST CAFÉ	2,083

1865 HERITAGE WALK - BUILDING I

STE	TENANT	SF
I-100	DUA VIETNAMESE	2,828

1885 HERITAGE WALK - BUILDING J

STE	TENANT	SF
J-100	WHITETAIL BICYCLE	2,910

1935 HERITAGE WALK - BUILDING K

STE	TENANT	SF
K-100	RESTO L'ANTOINETTE	2,488
K-110	ALUMNI COOKIE DOUGH	814
K-120/130	REESHA BARBERSHOP	2,522



Ackerman Retail

COURTNEY BRUMBELOW

P: 770.913.3905

E: cbrumbelow@ackermanco.net

©2023 Ackerman & Co. All rights reserved. While we have no reason to doubt the accuracy of the information provided from sources we deem reliable, we cannot guarantee it and therefore assume no liability for errors, omissions or changes to this content. Sources include CoStar, SitesUSA, ESRI, and Georgia DOT.

1850 HERITAGE WALK - BUILDING L

STE	TENANT	SF
L-100	SIX BRIDGES BREWING	1,580

1850B HERITAGE WALK - BUILDING M

STE	TENANT	SF
M-100	SPICED RIGHT RIB HOUSE	2,037

1870 HERITAGE WALK - BUILDING N

STE	TENANT	SF
N-100	DINNA ECKSTEIN DESIGN STUDIO	3,063

1880 HERITAGE WALK - BUILDING O

STE	TENANT	SF
O-100	AVAILABLE	3,026

1890 HERITAGE WALK - BUILDING P

STE	TENANT	SF
P-101	POE & COMPANY BOOKSTORE	1,570
P-102	EVIMERO MARKETPLACE	1,570



Ackerman Retail

COURTNEY BRUMBELOW

P: 770.913.3905

E: cbrumbelow@ackermanco.net

©2023 Ackerman & Co. All rights reserved. While we have no reason to doubt the accuracy of the information provided from sources we deem reliable, we cannot guarantee it and therefore assume no liability for errors, omissions or changes to this content. Sources include CoStar, SitesUSA, ESRI, and Georgia DOT.

AREA DEMOGRAPHICS (2023):

	1-MILE	3-MILE	5-MILE
POPULATION	6,752	42,934	125,872
HOUSEHOLDS	2,227	15,313	47,968
AVG HH INCOME	\$241,270	\$229,247	\$195,669



COURTNEY BRUMBELOW

P: 770.913.3905

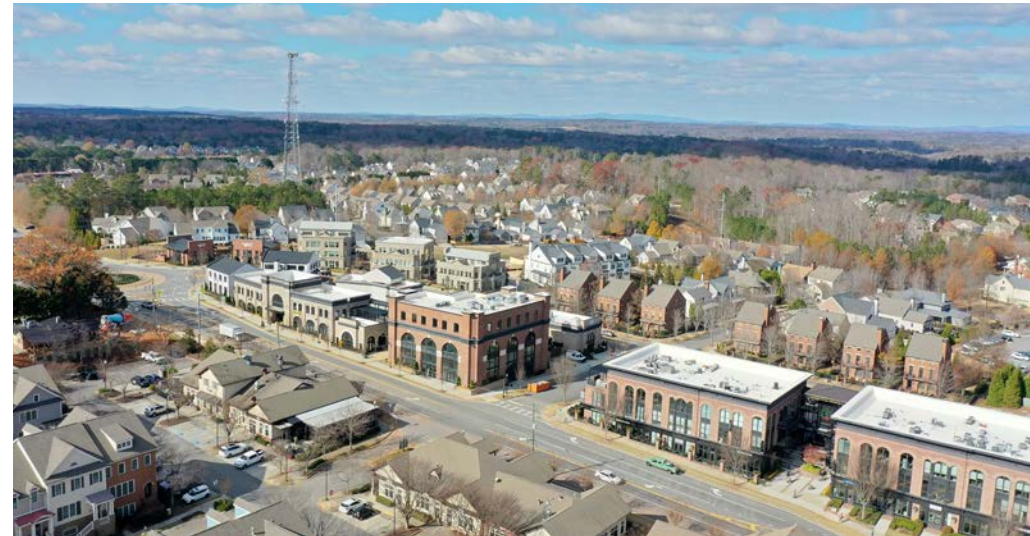
E: cbrumbelow@ackermanco.net

Ackerman Retail
A DIVISION OF ACKERMAN & CO



12610 - 12680 CRABAPPLE RD 1845 - 1935 HERITAGE WALK

Milton, GA 30004



COURTNEY BRUMBELOW

P: 770.913.3905

E: cbrumbelow@ackermanco.net

Ackerman Retail
A DIVISION OF ACKERMAN & CO



Ackerman Retail

COURTNEY BRUMBELOW

P: 770.913.3905

E: cbrumbelow@ackermanco.net

©2023 Ackerman & Co. All rights reserved. While we have no reason to doubt the accuracy of the information provided from sources we deem reliable, we cannot guarantee it and therefore assume no liability for errors, omissions or changes to this content. Sources include CoStar, SitesUSA, ESRI, and Georgia DOT.



Ackerman Retail

COURTNEY BRUMBELOW

P: 770.913.3905

E: cbrumbelow@ackermanco.net

©2023 Ackerman & Co. All rights reserved. While we have no reason to doubt the accuracy of the information provided from sources we deem reliable, we cannot guarantee it and therefore assume no liability for errors, omissions or changes to this content. Sources include CoStar, SitesUSA, ESRI, and Georgia DOT.