

FOR
LEASE

1518 SOUTHLAKE PARKWAY

Morrow, GA 30260 | Clayton County



SPACE AVAILABLE | 20,980 SF

PROPERTY HIGHLIGHTS

- Former furniture showroom located adjacent to Southlake Mall, in the Southlake Festival Shopping Center
- Great visibility and easy access
- 106 parking spaces
- Just off I-75, which carries 168,000 vehicles per day and Jonesboro Rd carrying over 32,000 VPD



SUZANNE SHANK

P: 770.913.3943

E: sshank@ackermanco.net

COURTNEY BRUMBELOW

P: 770.913.3905

E: cbrumbelow@ackermanco.net

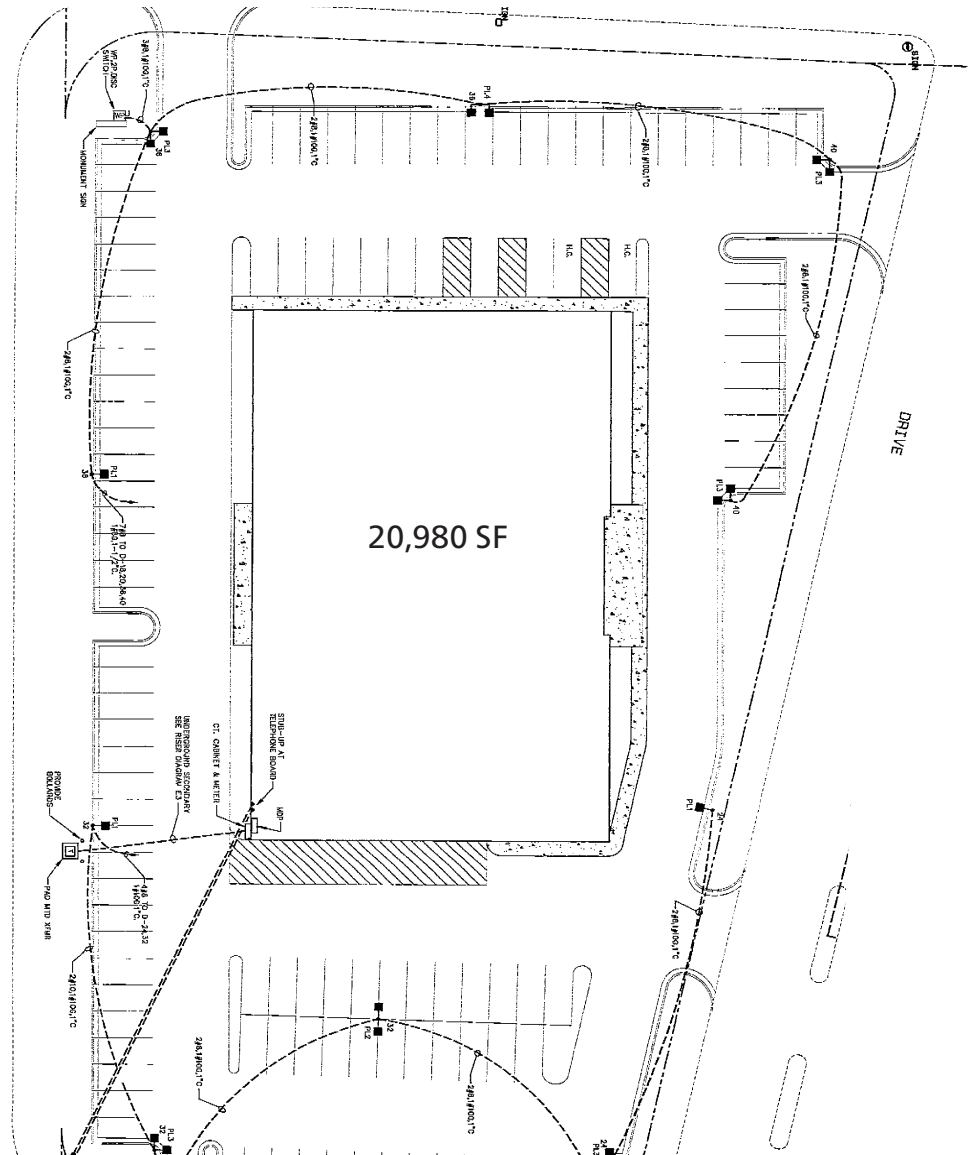
Ackerman Retail
A DIVISION OF ACKERMAN & CO

1518 SOUTHLAKE PARKWAY

Morrow, GA 30260 | Clayton County

AREA DEMOGRAPHICS (2023):

	1-MILE	3-MILE	5-MILE
POPULATION	6,289	79,165	187,916
HOUSEHOLDS	2,600	28,376	68,319
AVG HH INCOME	\$69,031	\$67,093	\$72,317



Ackerman Retail

SUZANNE SHANK

P: 770.913.3943

E: sshank@ackermanco.net

COURTNEY BRUMBELOW

P: 770.913.3905

E: cbrumbelow@ackermanco.net

©2023 Ackerman & Co. All rights reserved. While we have no reason to doubt the accuracy of the information provided from sources we deem reliable, we cannot guarantee it and therefore assume no liability for errors, omissions or changes to this content. Sources include CoStar, SitesUSA, ESRI, and Georgia DOT.

1518 SOUTHLAKE PARKWAY

Morrow, GA 30260 | Clayton County



Ackerman Retail

SUZANNE SHANK

P: 770.913.3943

E: sshank@ackermanco.net

COURTNEY BRUMBELOW

P: 770.913.3905

E: cbrumbelow@ackermanco.net

©2023 Ackerman & Co. All rights reserved. While we have no reason to doubt the accuracy of the information provided from sources we deem reliable, we cannot guarantee it and therefore assume no liability for errors, omissions or changes to this content. Sources include CoStar, SitesUSA, ESRI, and Georgia DOT.