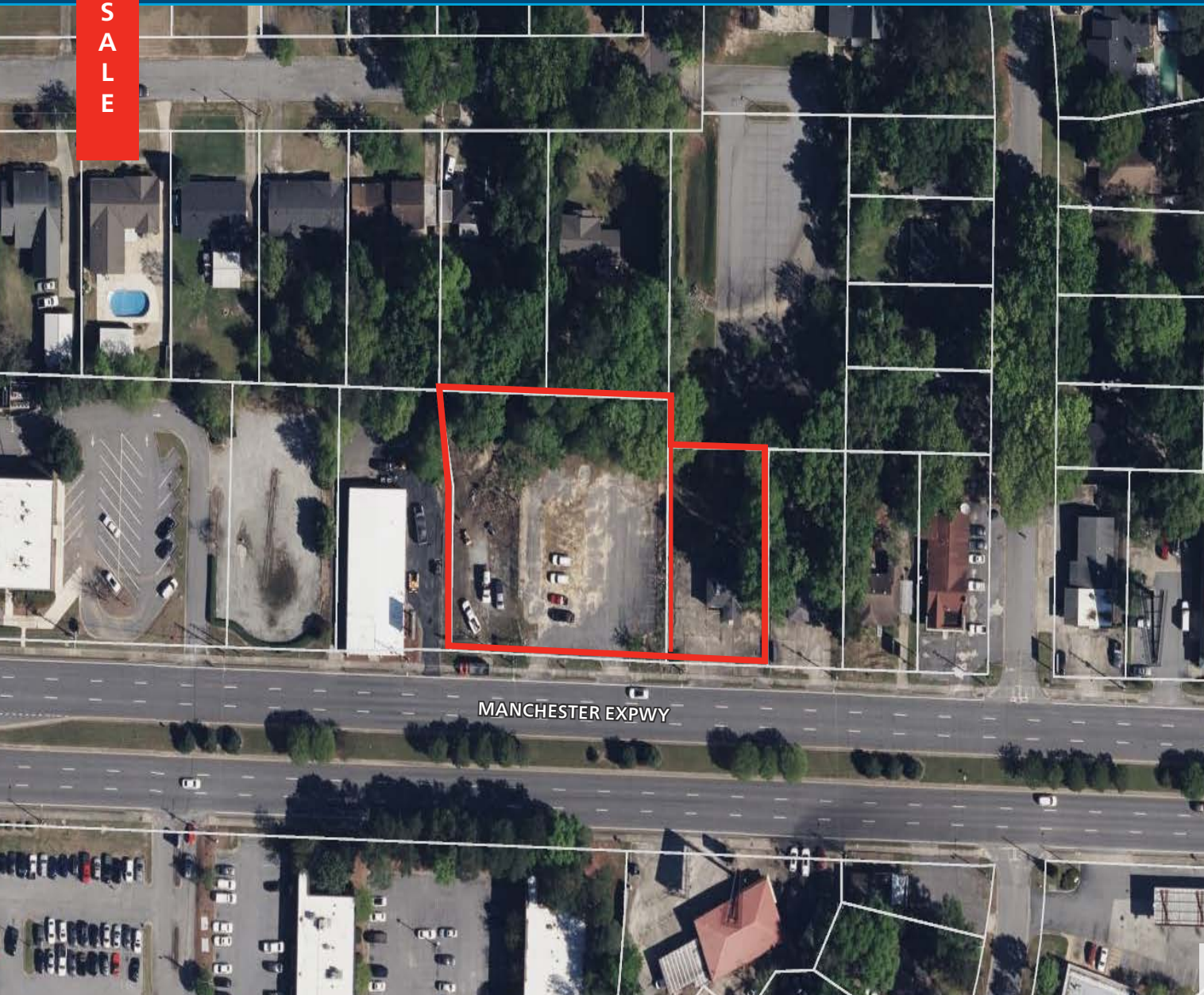


FOR SALE

COLUMBUS, GA LAND

2329 & 2403 Manchester Expressway, Columbus, GA 31904



LAND AVAILABLE
1.17 Acres | \$700,000

PROPERTY HIGHLIGHTS

- 1.17 acres available along Manchester Expressway in Columbus, GA
- Zoned General Commercial, ideal for single user or multi-tenant retail & service development
- 280 FT of frontage along one of Columbus' main retail arteries
- Less than 1/2-mile to I-185 which carries 69,400 vehicles per day
- Located directly across from St. Francis - Emory Healthcare Hospital, a 376-bed facility with over 2,800 employees
- 1 mile to Columbus State University, with nearly 10,000 students, faculty, and staff

BRYAN DAVIS

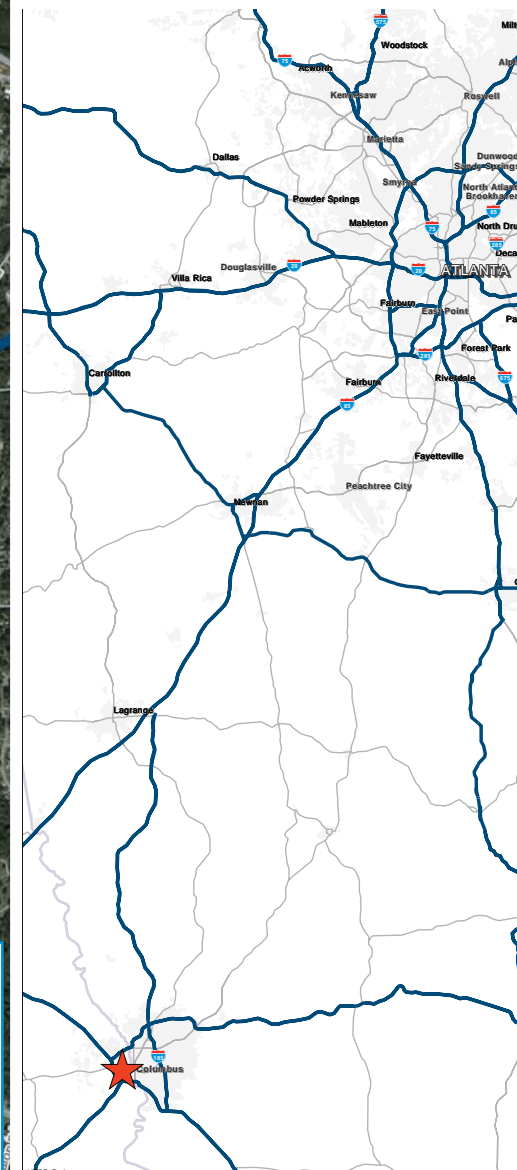
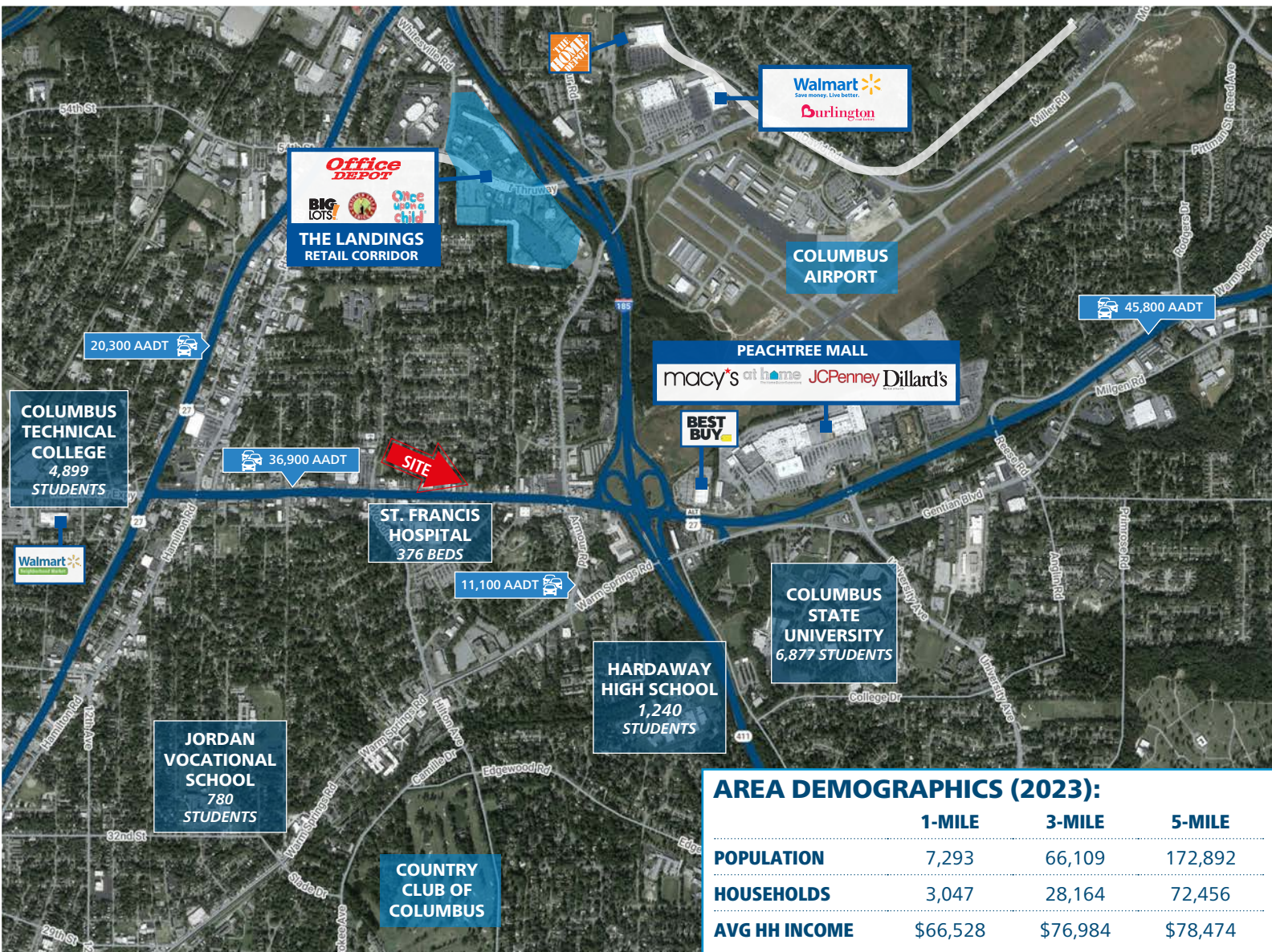
P: 770.913.3996

E: bdavis@ackermanco.net

Ackerman Retail
A DIVISION OF ACKERMAN & CO

COLUMBUS, GA LAND

2329 & 2403 Manchester Expressway, Columbus, GA 31904



AREA DEMOGRAPHICS (2023):

	1-MILE	3-MILE	5-MILE
POPULATION	7,293	66,109	172,892
HOUSEHOLDS	3,047	28,164	72,456
AVG HH INCOME	\$66,528	\$76,984	\$78,474

Ackerman Retail

BRYAN DAVIS

P: 770.913.3996

E: bdavis@ackermanco.net

©2023 Ackerman & Co. All rights reserved. While we have no reason to doubt the accuracy of the information provided from sources we deem reliable, we cannot guarantee it and therefore assume no liability for errors, omissions or changes to this content. Sources include CoStar, SitesUSA, ESRI, and Georgia DOT.