

F
O
R
L
E
A
S
E

BILLINGS CROSSING PLAZA

6361 Talokas Lane, Columbus, GA 31909

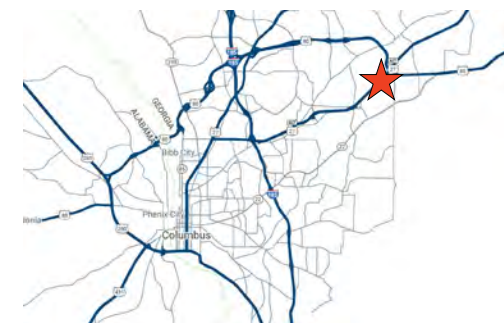


SPACE AVAILABLE

842 - 2,074 SF

PROPERTY HIGHLIGHTS

- 39,588 SF Walmart shadow-anchored center
- Popular retail center with diverse mix of national and local retailers
- Multiple access points from Gateway Blvd
- 280 surface parking spots
- Sits along a major retail node of northeast Columbus
- Daytime population of over 22,000 within 3 miles



COURTNEY BRUMBELOW

P: 770.913.3905

E: cbrumbelow@ackermanco.net

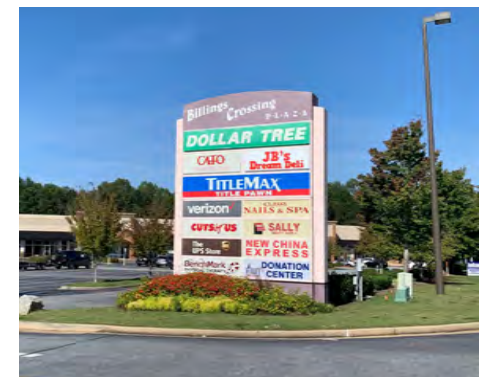
Ackerman Retail
A DIVISION OF ACKERMAN & CO

BILLINGS CROSSING PLAZA

6361 Talokas Lane, Columbus, GA 31909



STE	TENANT	SF
C100	TITLEMAX	4,232
C130	CUTS BY US	1,413
C140	THE UPS STORE	1,413
C150	VERIZON WIRELESS	1,477
C160	SALLY BEAUTY	1,448
C170	BENCHMARK PT	1,511
C180	JB'S DREAM DELI	1,514
C190	NEW CHINA EXPRESS	1,452
D200	AVAILABLE	842
D210A	COLUMBUS TOBACCO & VAPE	2,998
D210B	AVAILABLE	2,074
D240	CATO	4,013
D250	CLASSY NAILS & SPA	2,935
D280	DOLLAR TREE	10,186
D290	VALLEY RESCUE MISSION	2,177



Ackerman Retail

COURTNEY BRUMBELOW

P: 770.913.3905

E: cbrumbelow@ackermanco.net

©2023 Ackerman & Co. All rights reserved. While we have no reason to doubt the accuracy of the information provided from sources we deem reliable, we cannot guarantee it and therefore assume no liability for errors, omissions or changes to this content. Sources include CoStar, SitesUSA, ESRI, and Georgia DOT.

BILLINGS CROSSING PLAZA

6361 Talokas Lane, Columbus, GA 31909



AREA DEMOGRAPHICS (2023):

	1-MILE	3-MILE	5-MILE
POPULATION	9,407	36,412	91,173
HOUSEHOLDS	4,106	14,725	36,543
AVG HH INCOME	\$104,952	\$100,693	\$91,552

Ackerman Retail

COURTNEY BRUMBLOW

P: 770.913.3905

E: cbrumbelow@ackermanco.net

©2023 Ackerman & Co. All rights reserved. While we have no reason to doubt the accuracy of the information provided from sources we deem reliable, we cannot guarantee it and therefore assume no liability for errors, omissions or changes to this content. Sources include CoStar, SitesUSA, ESRI, and Georgia DOT.