



# EAST PARK

## DISTRIBUTION CENTER

2020 East Park Drive | Conyers, Georgia, 30013

### INDUSTRIAL WAREHOUSE AVAILABLE

#### SPACE AVAILABLE

Up to 98,544 SF

**BRETT BUCKNER**

770.913.3923 | [bbuckner@ackermanco.net](mailto:bbuckner@ackermanco.net) | [www.ackermanco.com](http://www.ackermanco.com)

**CHRIS MILLER**

770.913.3989 | [cmiller@ackermanco.net](mailto:cmiller@ackermanco.net)

**DAVIS MORELAND**

770.913.3919 | [dmoreland@ackermanco.net](mailto:dmoreland@ackermanco.net)

#### HIGHLIGHTS

- Up to 98,544 SF available
- 1,500 SF of spec office (under construction)
- 32' ceiling height
- 19 dock-high doors | 1 drive-in door
- 2,000 amp. 277/480 volt
- 98 auto spaces | 19 trailer spaces
- ESFR sprinkler system
- Existing LED lighting on motion sensors
- Convenient access to I-20 and GA-138
- Abundant amenities in downtown Conyers and nearby areas

# East Park Distribution Center

Industrial Warehouse for Lease – 98,544 SF

2020 East Park Drive NE  
 Conyers, Georgia, 30013  
 Rockdale County

## NOTABLE DISTANCES

### MAJOR ARTERIES / INTERSTATES

I-20	2 miles
I-285	16.5 miles
I-75	28 miles
I-85	32.5 miles

### AIR

HARTSFIELD-JACKSON ATLANTA INT'L AIRPORT	32 miles
--	----------



**BRETT BUCKNER**  
 770.913.3923 | [bbuckner@ackermanco.net](mailto:bbuckner@ackermanco.net) | [www.ackermanco.com](http://www.ackermanco.com)

**CHRIS MILLER**  
 770.913.3989 | [cmiller@ackermanco.net](mailto:cmiller@ackermanco.net)

**DAVIS MORELAND**  
 770.913.3919 | [dmoreland@ackermanco.net](mailto:dmoreland@ackermanco.net)

## Ackerman & Co.

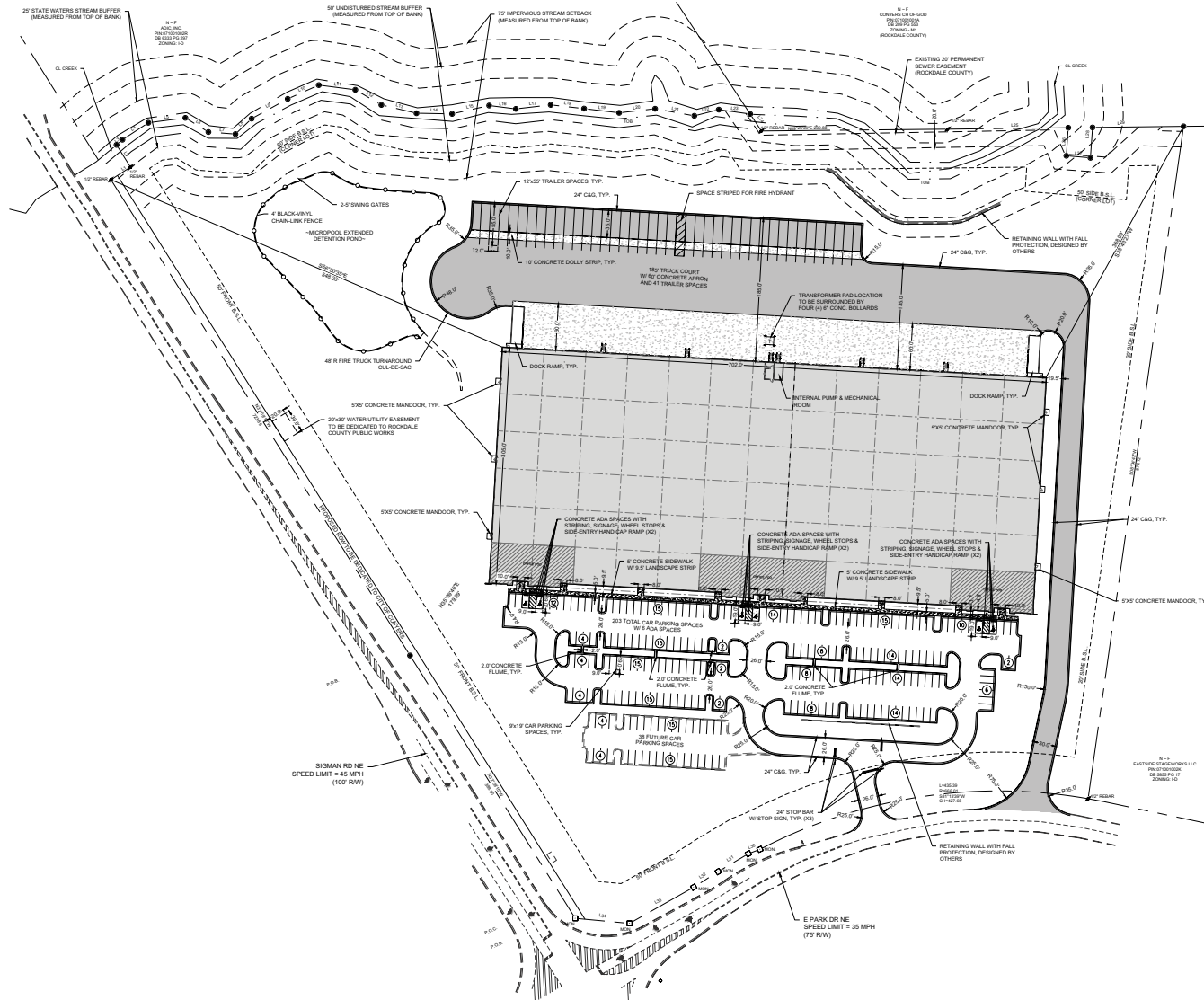
©2023 Ackerman & Co. All rights reserved. While we have no reason to doubt the accuracy of the information provided from sources we deem reliable, we cannot guarantee it and therefore assume no liability for errors, omissions or changes to this content.

# East Park Distribution Center

Industrial Warehouse for Lease – 98,544 SF

2020 East Park Drive NE  
Conyers, Georgia, 30013  
Rockdale County

## SITE PLAN



**BRETT BUCKNER**  
770.913.3923 | [bbuckner@ackermanco.net](mailto:bbuckner@ackermanco.net) | [www.ackermanco.com](http://www.ackermanco.com)

**CHRIS MILLER**  
770.913.3989 | [cmiller@ackermanco.net](mailto:cmiller@ackermanco.net)

**DAVIS MORELAND**  
770.913.3919 | [dmoreland@ackermanco.net](mailto:dmoreland@ackermanco.net)

## Ackerman & Co.

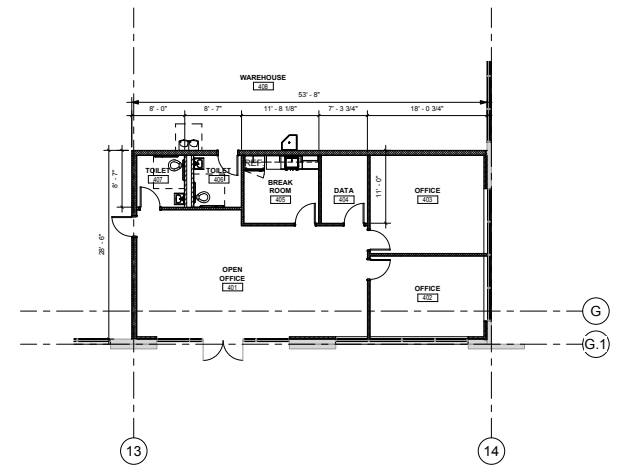
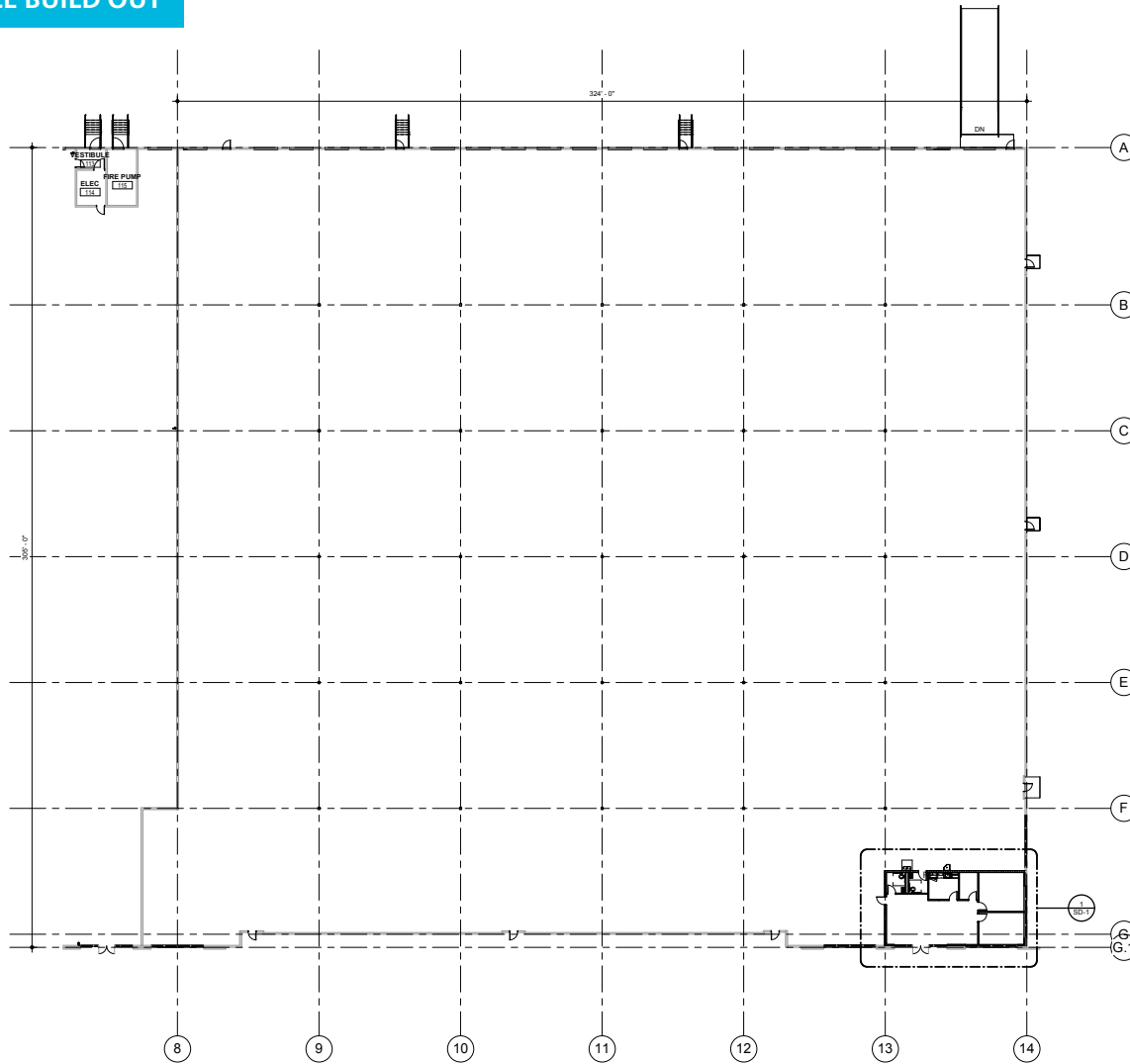
©2023 Ackerman & Co. All rights reserved. While we have no reason to doubt the accuracy of the information provided from sources we deem reliable, we cannot guarantee it and therefore assume no liability for errors, omissions or changes to this content.

# East Park Distribution Center

Industrial Warehouse for Lease – 98,544 SF

2020 East Park Drive NE  
Conyers, Georgia, 30013  
Rockdale County

## OFFICE BUILD OUT



**BRETT BUCKNER**  
770.913.3923 | [bbuckner@ackermanco.net](mailto:bbuckner@ackermanco.net) | [www.ackermanco.com](http://www.ackermanco.com)

**CHRIS MILLER**  
770.913.3989 | [cmiller@ackermanco.net](mailto:cmiller@ackermanco.net)

**DAVIS MORELAND**  
770.913.3919 | [dmoreland@ackermanco.net](mailto:dmoreland@ackermanco.net)

## Ackerman & Co.

©2023 Ackerman & Co. All rights reserved. While we have no reason to doubt the accuracy of the information provided from sources we deem reliable, we cannot guarantee it and therefore assume no liability for errors, omissions or changes to this content.

# East Park Distribution Center

Industrial Warehouse for Lease – 98,544 SF

2020 East Park Drive NE  
Conyers, Georgia, 30013  
Rockdale County

## PROPERTY PHOTOS



**BRETT BUCKNER**

770.913.3923 | [bbuckner@ackermanco.net](mailto:bbuckner@ackermanco.net) | [www.ackermanco.com](http://www.ackermanco.com)

**CHRIS MILLER**

770.913.3989 | [cmiller@ackermanco.net](mailto:cmiller@ackermanco.net)

**DAVIS MORELAND**

770.913.3919 | [dmoreland@ackermanco.net](mailto:dmoreland@ackermanco.net)

## Ackerman & Co.

©2023 Ackerman & Co. All rights reserved. While we have no reason to doubt the accuracy of the information provided from sources we deem reliable, we cannot guarantee it and therefore assume no liability for errors, omissions or changes to this content.