

Ackerman & Co.



UP TO 56,690 SF AVAILABLE

INDUSTRIAL BUILDING FOR LEASE

6424 Warren Dr | Norcross, GA 30084
Northeast Atlanta Submarket

FOR LEASE: SHALLOW-BAY INDUSTRIAL

DIRECTLY BEHIND "FURNITURE ROW" WITH IMMEDIATE ACCESS TO I-85

6424 Warren Dr | Norcross, GA 30084
Northeast Atlanta Submarket

AVAILABLE

Building 6424

Suite 6420: 10,576 SF

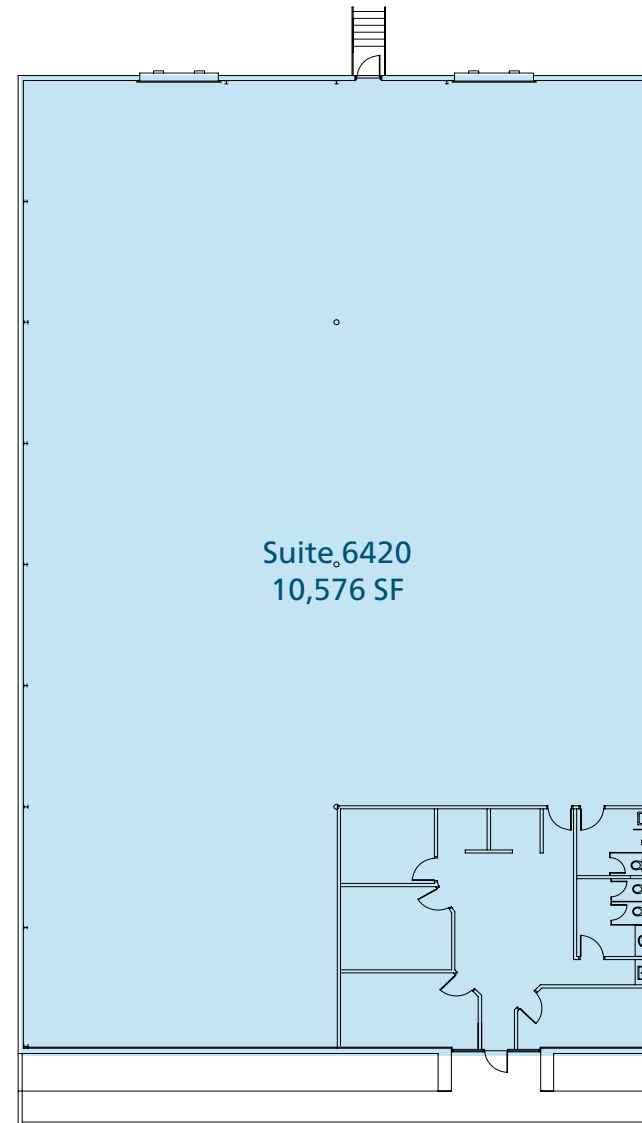
Zoning: M-1 (Light Industrial)

Inline Space

Ample Parking

BUILDING FEATURES

Clear Height:	18'
Building Depth:	±125'
Dock-High Doors:	11
Truck Court Depth:	70'
Loading Type:	Rear
Lighting Type:	T5/Fluorescent
Roof Type:	TPO
Roof Age:	2014; 2024 Warranty



FOR LEASE: SHALLOW-BAY INDUSTRIAL

DIRECTLY BEHIND "FURNITURE ROW" WITH IMMEDIATE ACCESS TO I-85

6424 Warren Dr | Norcross, GA 30084
Northeast Atlanta Submarket

AVAILABLE

Building 6424

Suite 6428: 20,458 SF

Suite 6430: 10,234 SF

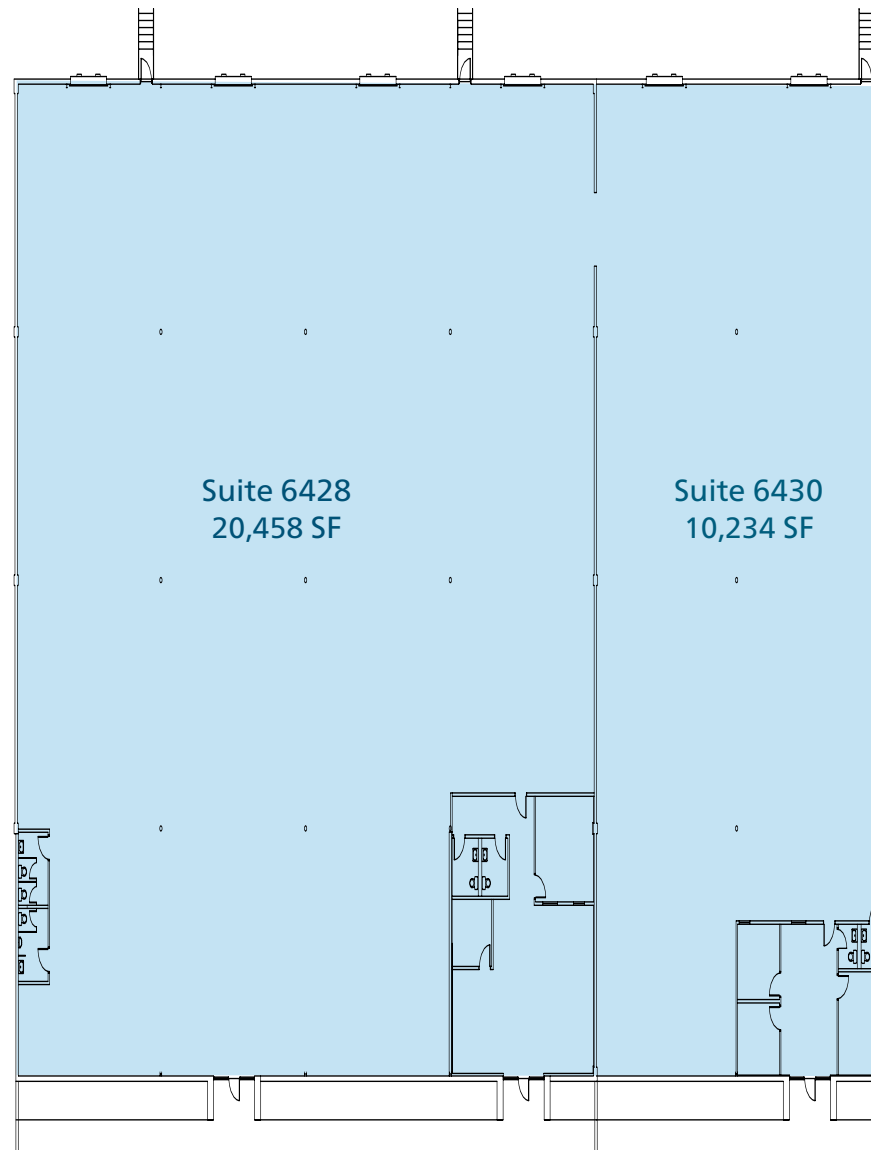
Zoning: M-1 (Light Industrial)

Inline Space

Ample Parking

BUILDING FEATURES

Clear Height:	18'
Building Depth:	±125'
Dock-High Doors:	11
Truck Court Depth:	70'
Loading Type:	Rear
Lighting Type:	T5/Fluorescent
Roof Type:	TPO
Roof Age:	2014; 2024 Warranty



FOR LEASE: SHALLOW-BAY INDUSTRIAL

DIRECTLY BEHIND "FURNITURE ROW" WITH IMMEDIATE ACCESS TO I-85

6424 Warren Dr | Norcross, GA 30084
Northeast Atlanta Submarket

AVAILABLE

Building 6424

Suite 6432: 15,422 SF

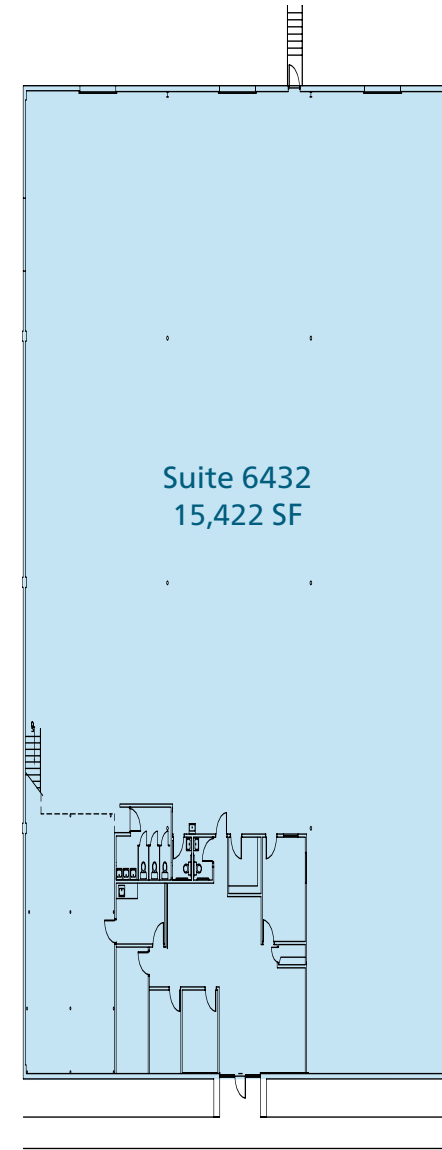
Zoning: M-1 (Light Industrial)

Inline Space

Ample Parking

BUILDING FEATURES

Clear Height:	18'
Building Depth:	±125'
Dock-High Doors:	11
Truck Court Depth:	70'
Loading Type:	Rear
Lighting Type:	T5/Fluorescent
Roof Type:	TPO
Roof Age:	2014; 2024 Warranty

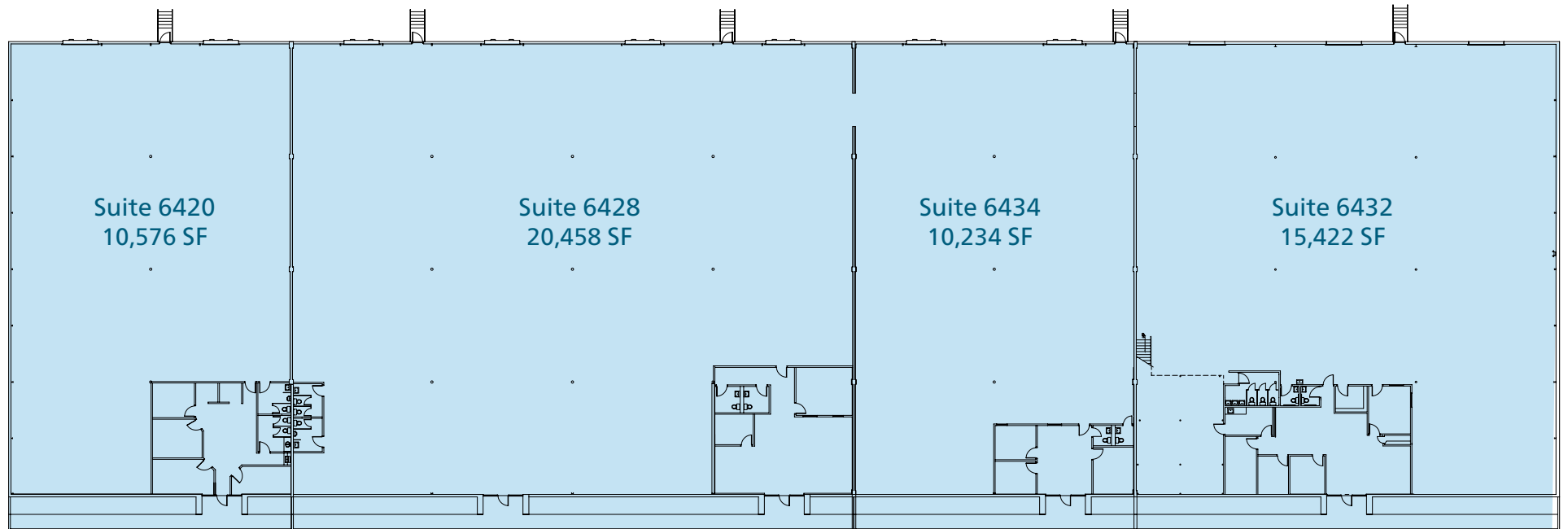


FOR LEASE: SHALLOW-BAY INDUSTRIAL

DIRECTLY BEHIND "FURNITURE ROW" WITH IMMEDIATE ACCESS TO I-85

6424 Warren Dr | Norcross, GA 30084
Northeast Atlanta Submarket

UP TO 56,690 SF



FOR LEASE: SHALLOW-BAY INDUSTRIAL

DIRECTLY BEHIND "FURNITURE ROW" WITH IMMEDIATE ACCESS TO I-85

6424 Warren Dr | Norcross, GA 30084
Northeast Atlanta Submarket

