

# 2700 Highway 34 East - Bldg 100

Newnan, Georgia 30265 | Fayette/Coweta County

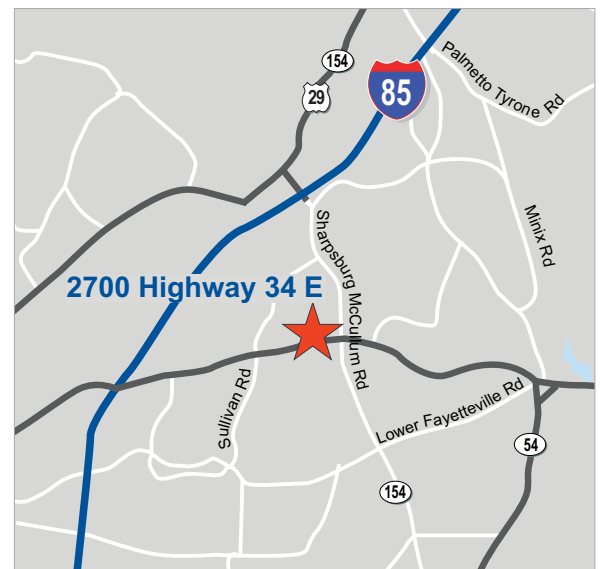


## SINGLE TENANT MEDICAL OFFICE BUILDING FOR LEASE

**SPACE AVAILABLE** 5,040 SF  
**LEASE RATE:** \$18/SF NNN

### EXCELLENT FACILITY IN PRIME LOCATION

- Turn-key medical office space
- Monument signage along heavily trafficked Hwy 34
- Ample parking 5.00/1,000 SF
- Easy access to I-85
- Abundant amenities in immediate area, convenient to banking, dining and grocery.
- Minimal overhead
- Eight exam rooms
- Separate staff entrance



**BRETT BUCHWALD**  
770.328.8311 | [bbuchwald@ackermanco.net](mailto:bbuchwald@ackermanco.net)

**DEL EARLY**  
770.913.3913 | [dearly@ackermanco.net](mailto:dearly@ackermanco.net)

**REID MOORE**  
770.913.3918 | [rmoore@ackermanco.net](mailto:rmoore@ackermanco.net)

**Ackerman  Medical**

[www.ackermanmedical.com](http://www.ackermanmedical.com)

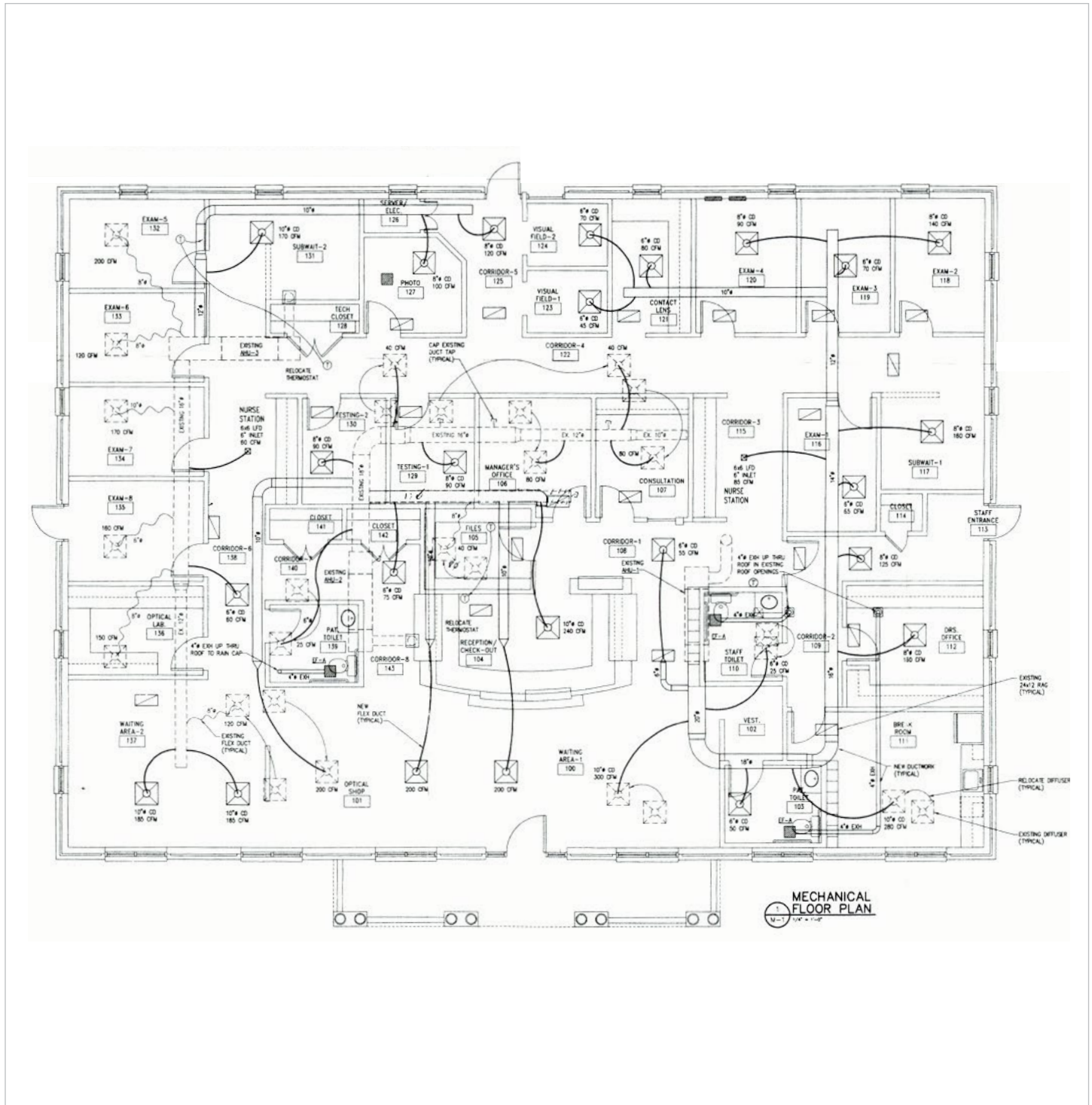
©2019 Ackerman & Co. All rights reserved. While we have no reason to doubt the accuracy of the information provided from sources we deem reliable, we cannot guarantee it and therefore assume no liability for errors, omissions or changes to this content.

# 2700 Highway 34 East - Bldg 100

Medical Office for Lease: 5,040 SF

Newnan, GA 30265  
Fayette/Coweta County

## FLOOR PLAN



**BRETT BUCHWALD**

770.328.8311 | [bbuchwald@ackermanco.net](mailto:bbuchwald@ackermanco.net)

**DEL EARLY**

770.913.3913 | [dearly@ackermanco.net](mailto:dearly@ackermanco.net)

**REID MOORE**

770.913.3918 | [rmoore@ackermanco.net](mailto:rmoore@ackermanco.net)

**Ackerman  Medical**

[www.ackermanmedical.com](http://www.ackermanmedical.com)

©2019 Ackerman & Co. All rights reserved. While we have no reason to doubt the accuracy of the information provided from sources we deem reliable, we cannot guarantee it and therefore assume no liability for errors, omissions or changes to this content.

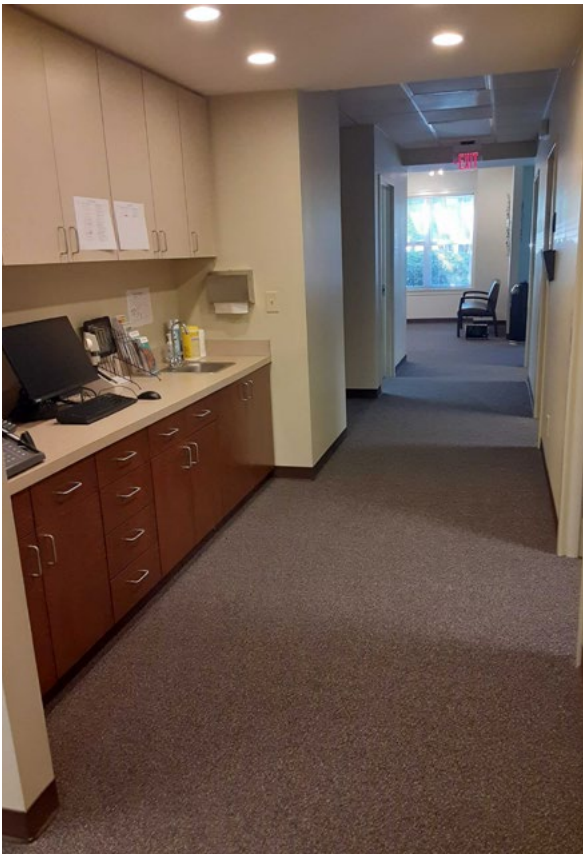
# 2700 Highway 34 East - Bldg 100

Medical Office for Lease: 5,040 SF

Newnan, GA 30265  
Fayette/Coweta County



## PROPERTY PHOTOS



**BRETT BUCHWALD**  
770.328.8311 | [bbuchwald@ackermanco.net](mailto:bbuchwald@ackermanco.net)

**DEL EARLY**  
770.913.3913 | [dearly@ackermanco.net](mailto:dearly@ackermanco.net)

**REID MOORE**  
770.913.3918 | [rmoore@ackermanco.net](mailto:rmoore@ackermanco.net)