

1713 Lakewood Ave

Atlanta, GA 30315 | Fulton County



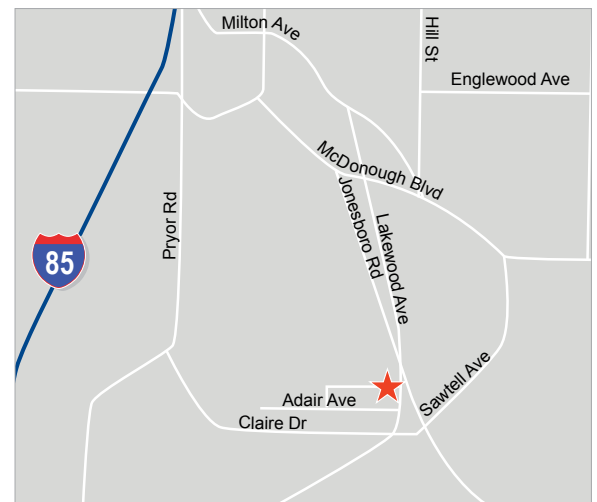
RETAIL LAND FOR SALE OR LEASE

SITE 15,494 SF | .356 Acres

ASKING PRICE \$295,000

HIGHLIGHTS

- MRC-1-C Zoning - allows for most commercial/retail uses
- Corner of Jonesboro Road and Lakewood Avenue
- 1/4 mile from Lakewood Fairgrounds
- 2 miles to Mercedes Benz Stadium
- 1.75 miles to Atlanta Beltline
- 3 miles to downtown Atlanta
- Next to new Family Dollar
- Additional 3,600 SF (contact Broker for details)



WALT BODEN

770.913.3928 | wboden@ackermanco.net

www.ackermanco.com

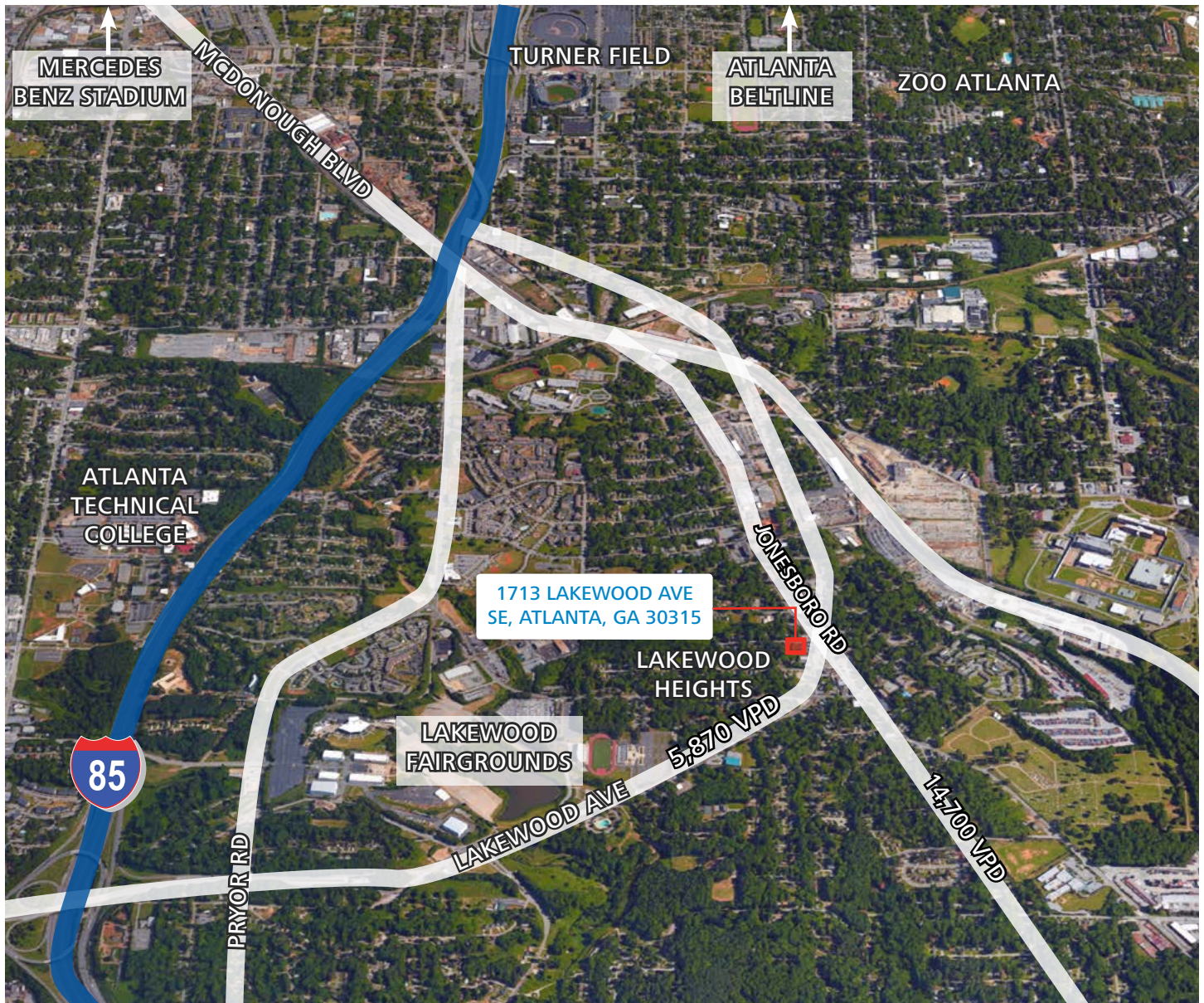
Ackerman & Co.

1713 Lakewood Ave

Retail Land for Sale: 15,494 SF

Atlanta, GA 30315
Fulton County

AERIAL



DEMOGRAPHICS (2018)

	1 MILE	3 MILES	5 MILE
Population	13,698	86,728	274,877
Number of Households	4,403	33,958	113,099
Avg. Household Income	\$46,234	\$63,571	\$68,848

WALT BODEN

770.913.3928 | wboden@ackermanco.net
www.ackermanco.com

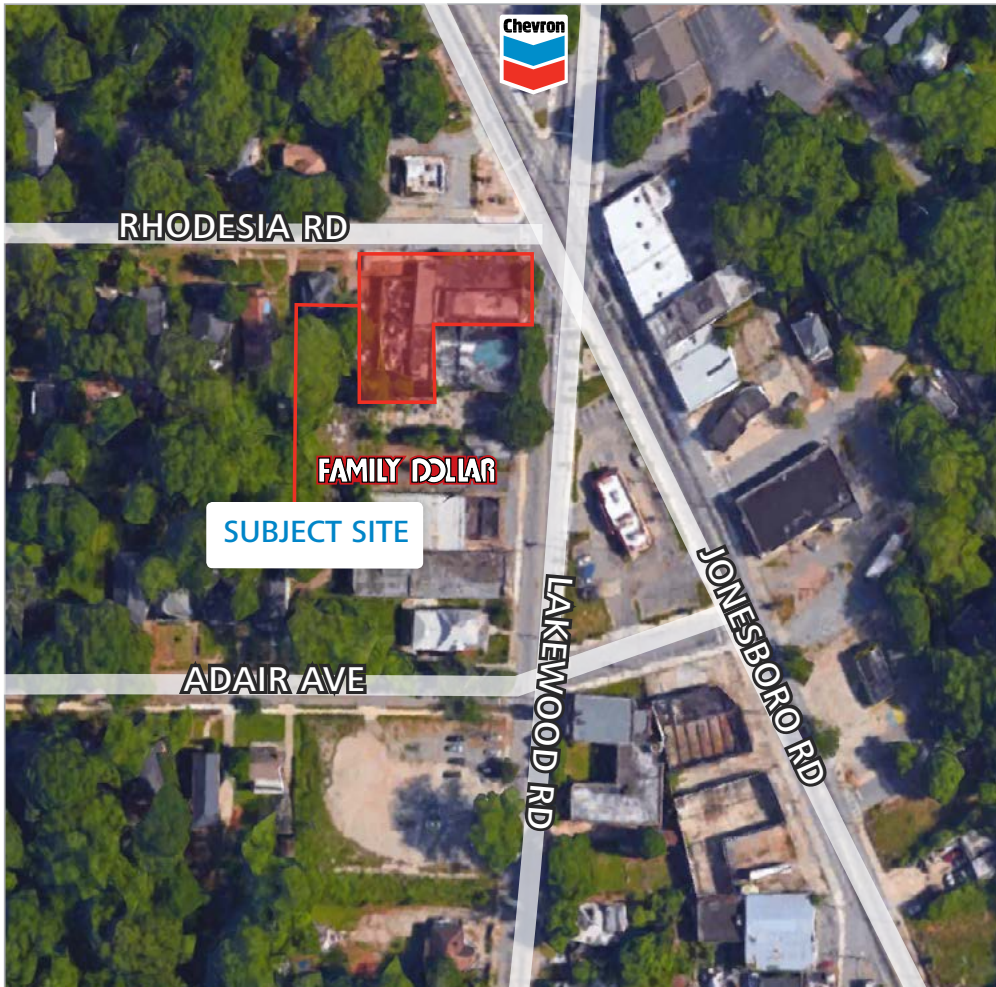
Ackerman & Co.

1713 Lakewood Ave

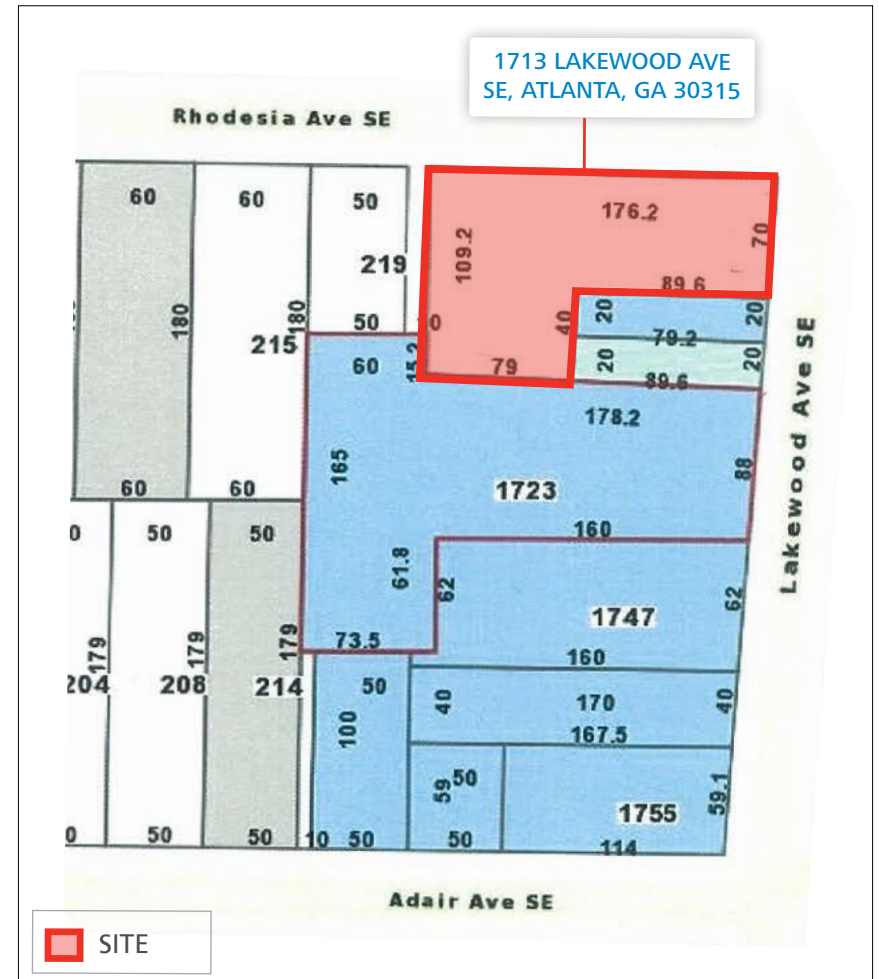
Retail Land for Sale: 15,494 SF

Atlanta, GA 30315
Fulton County

LOW ALTITUDE AERIAL



TAX PLAT



WALT BODEN

770.913.3928 | wboden@ackermanco.net

www.ackermanco.com

Ackerman & Co.