

# CONYERS OUTPARCELS

Sigman Rd NW & Callaway Crossing Dr, Conyers, GA 30012






## PROPERTY HIGHLIGHTS

- Sale, Ground Lease, or Build to Suit available on remaining 1.1 acre outparcel
- Finished pad with existing mobile bank
- Located across from Conyers Middle and Pine Tree Elementary schools serving over 1,600 students combined
- Piedmont Hospital Rockdale is less than one mile away, with 138 beds and 1,700 employees and physicians on staff
- Surrounded by established neighborhoods, with additional planned residential developments nearby



## AREA DEMOGRAPHICS (2023):

	1-MILE	3-MILE	5-MILE
 POPULATION	6,383	32,238	67,336
 HOUSEHOLDS	2,280	11,396	24,208
 AVG HH INCOME	\$115,766	\$88,793	\$92,522

COURTNEY BRUMBELOW

P: 770.913.3905

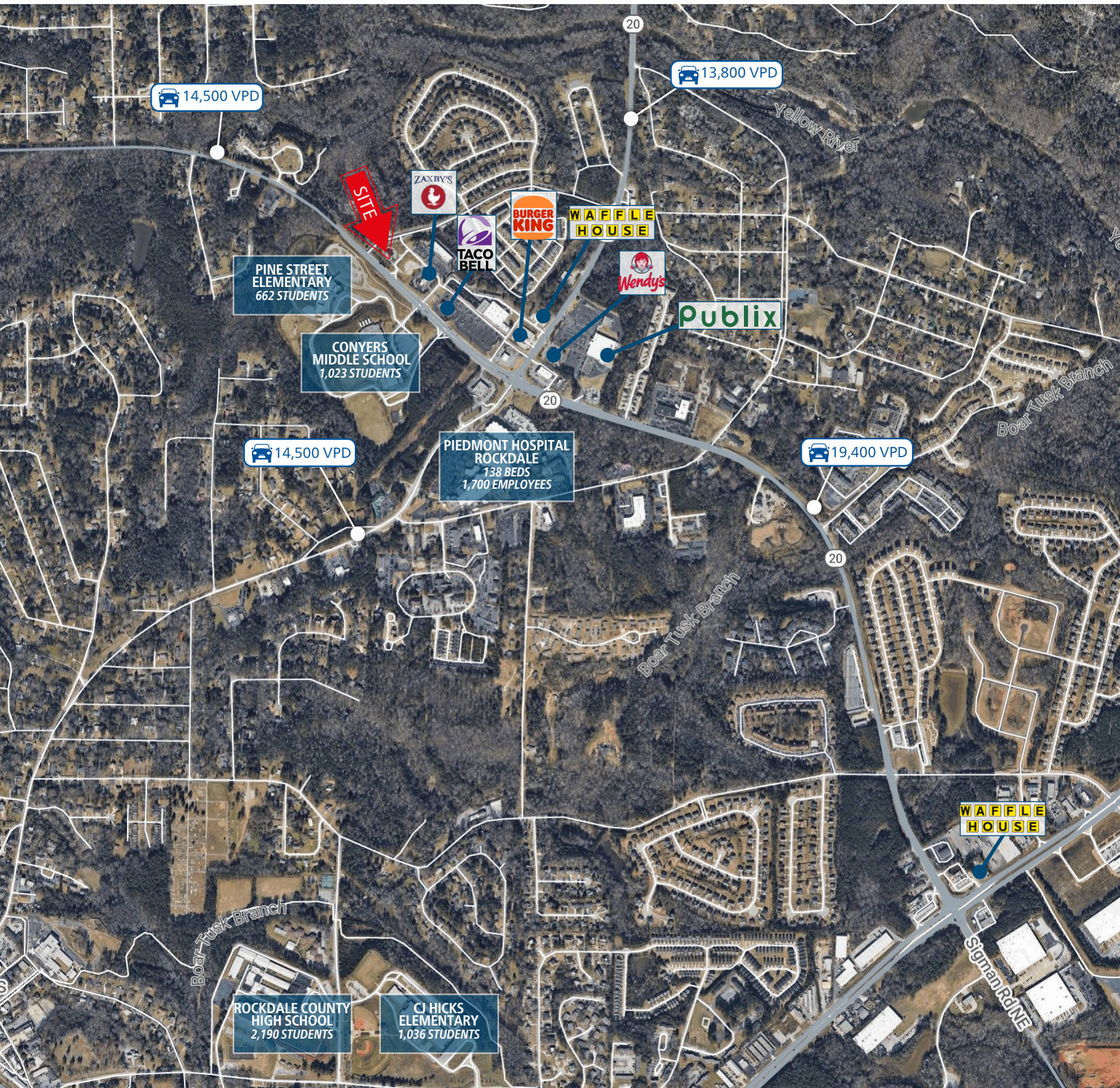
E: cbrumbelow@ackermanco.net

Ackerman Retail  
A DIVISION OF ACKERMAN & CO



# CONYERS OUTPARCELS

Sigman Rd NW & Callaway Crossing Dr, Conyers, GA 30012



## Ackerman Retail

COURTNEY BRUMBELOW

P: 770.913.3905

E: cbrumbelow@ackermanco.net

©2023 Ackerman & Co. All rights reserved. While we have no reason to doubt the accuracy of the information provided from sources we deem reliable, we cannot guarantee it and therefore assume no liability for errors, omissions or changes to this content. Sources include CoStar, SitesUSA, ESRI, and Georgia DOT.