

THE GRAND



239 Village Center Parkway | Stockbridge, Georgia 30281 | Henry County

FOR LEASE MEDICAL OFFICE SUITES

SPACE AVAILABLE | 1,910 RSF - 3,893 RSF

LEASING RATE | \$21 NNN

HIGHLIGHTS

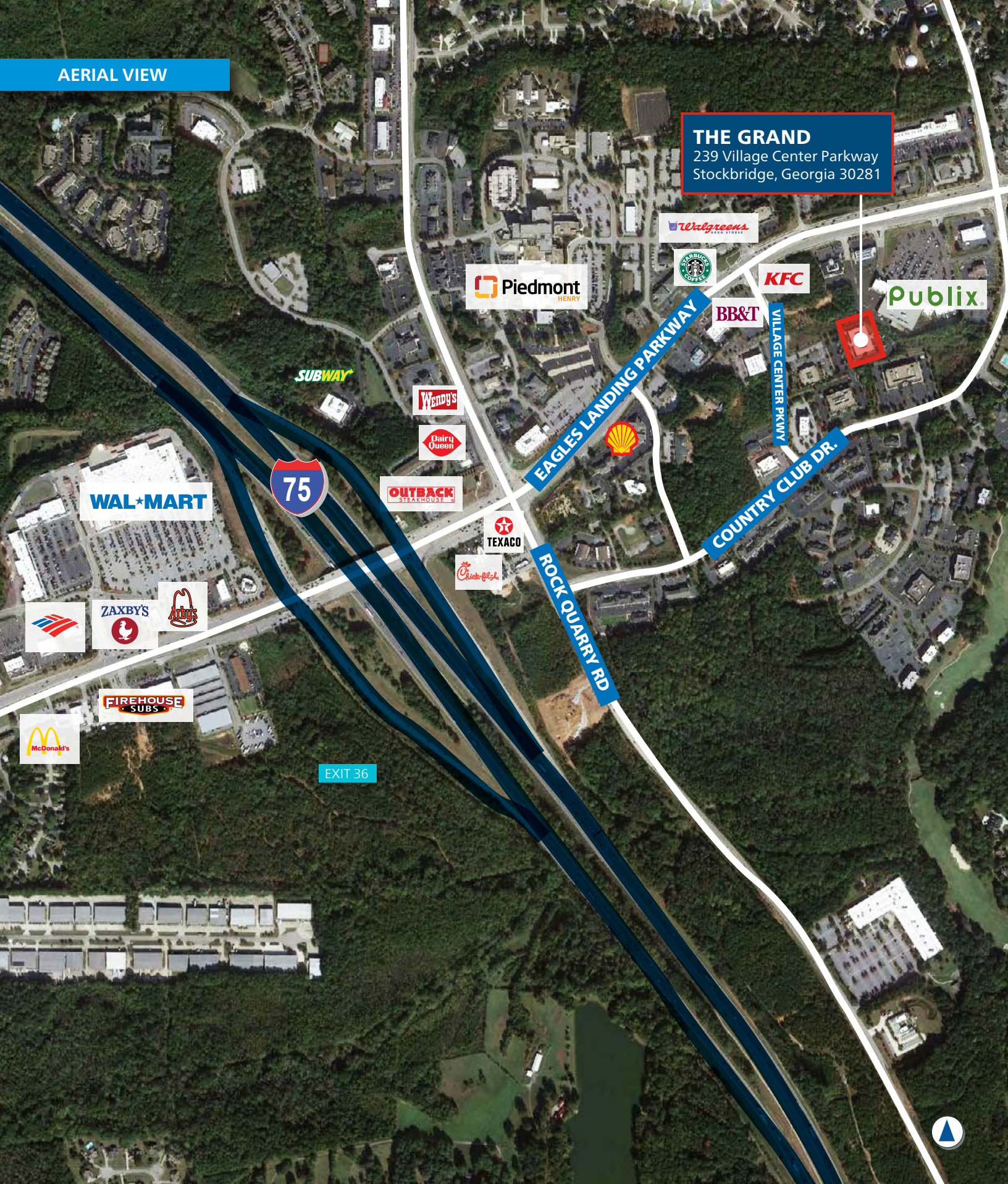
- First floor lobby space available
- Great value location – high quality yet affordable for all practices
- Aggressive lease terms / incentives being offered
- Local property management office
- Generous tenant improvement allowances
- Class A medical space
- Ample surface parking proximate to the building
- Located in the heart of Eagles Landing

KEVIN EHRINGER | 770.913.3960 | kehringer@ackermanco.net

©2021 Ackerman & Co. All rights reserved. While we have no reason to doubt the accuracy of the information provided from sources we deem reliable, we cannot guarantee it and therefore assume no liability for errors, omissions or changes to this content.

Ackerman  Medical
www.ackermanmedical.com

AERIAL VIEW



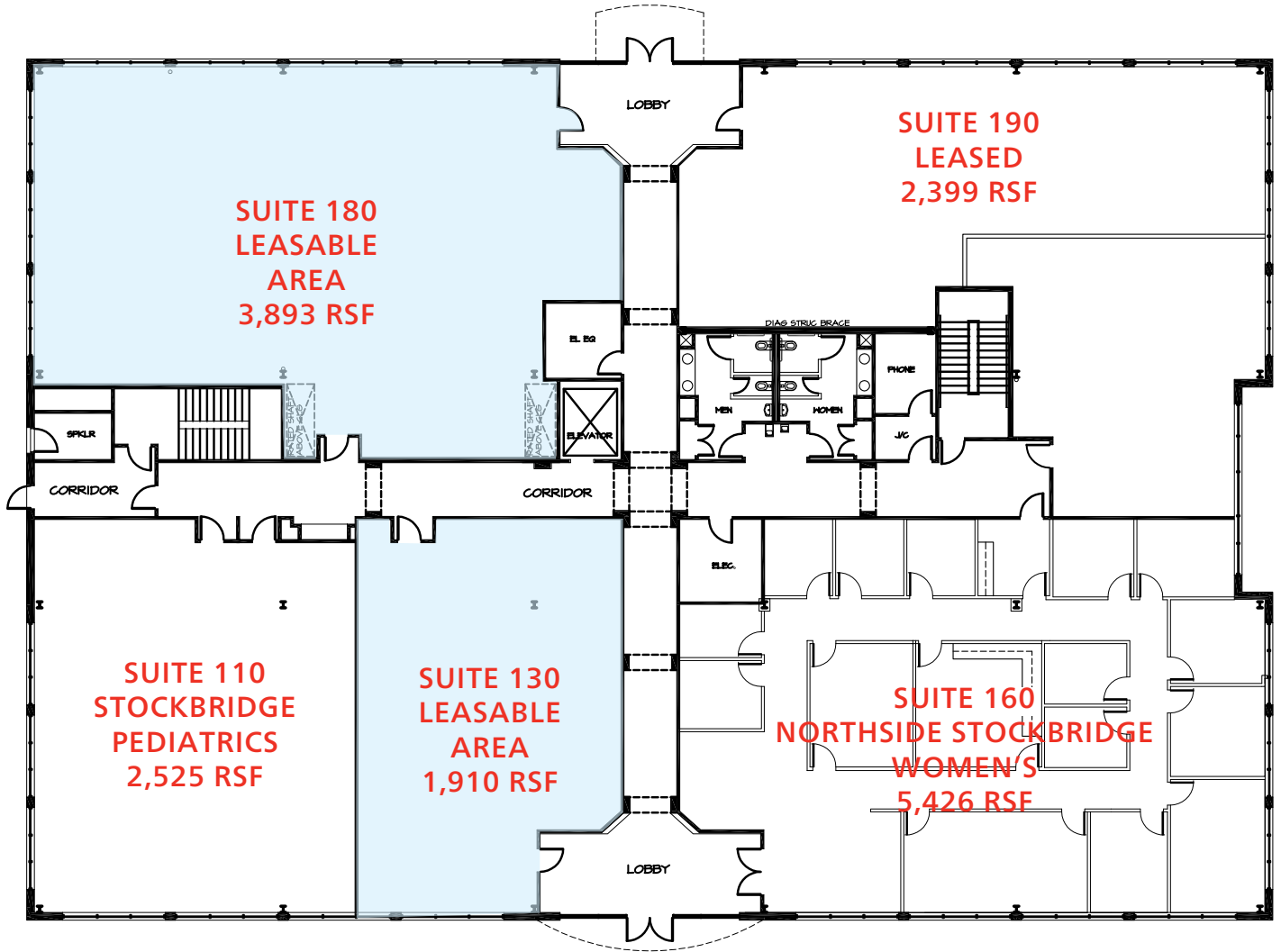
THE GRAND
239 Village Center Parkway
Stockbridge, Georgia 30281

KEVIN EHRINGER | 770.913.3960 | kehringer@ackermanco.net

Ackerman  Medical

©2021 Ackerman & Co. All rights reserved. While we have no reason to doubt the accuracy of the information provided from sources we deem reliable, we cannot guarantee it and therefore assume no liability for errors, omissions or changes to this content.

www.ackermanmedical.com



Available