

# 1395 Cobb Parkway

Marietta, GA 30060 | East Cobb

CAM  
AND WATER  
INCLUDED

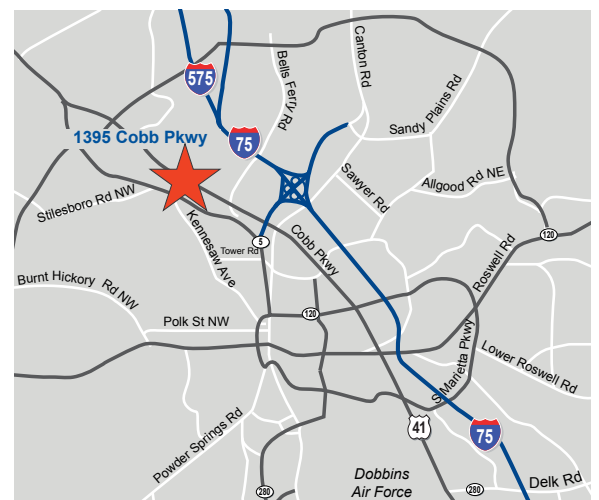


## INDUSTRIAL OFFICE FOR LEASE

**SPACE AVAILABLE** 7,200 SF  
**LEASE RATE** \$5.50 modified gross

### HIGHLIGHTS

- 4,560 SF office space
- 19' clear ceiling heights
- (2) DID
- Cobb Parkway signage
- Ample parking
- 100% sprinkler
- Lunch / breakroom space available
- CAM and water included
- Zoned commercial



WALTER BODEN, Senior Vice President  
770.913.3928  
wboden@ackermanco.net

www.ackermanco.com

Ackerman & Co.

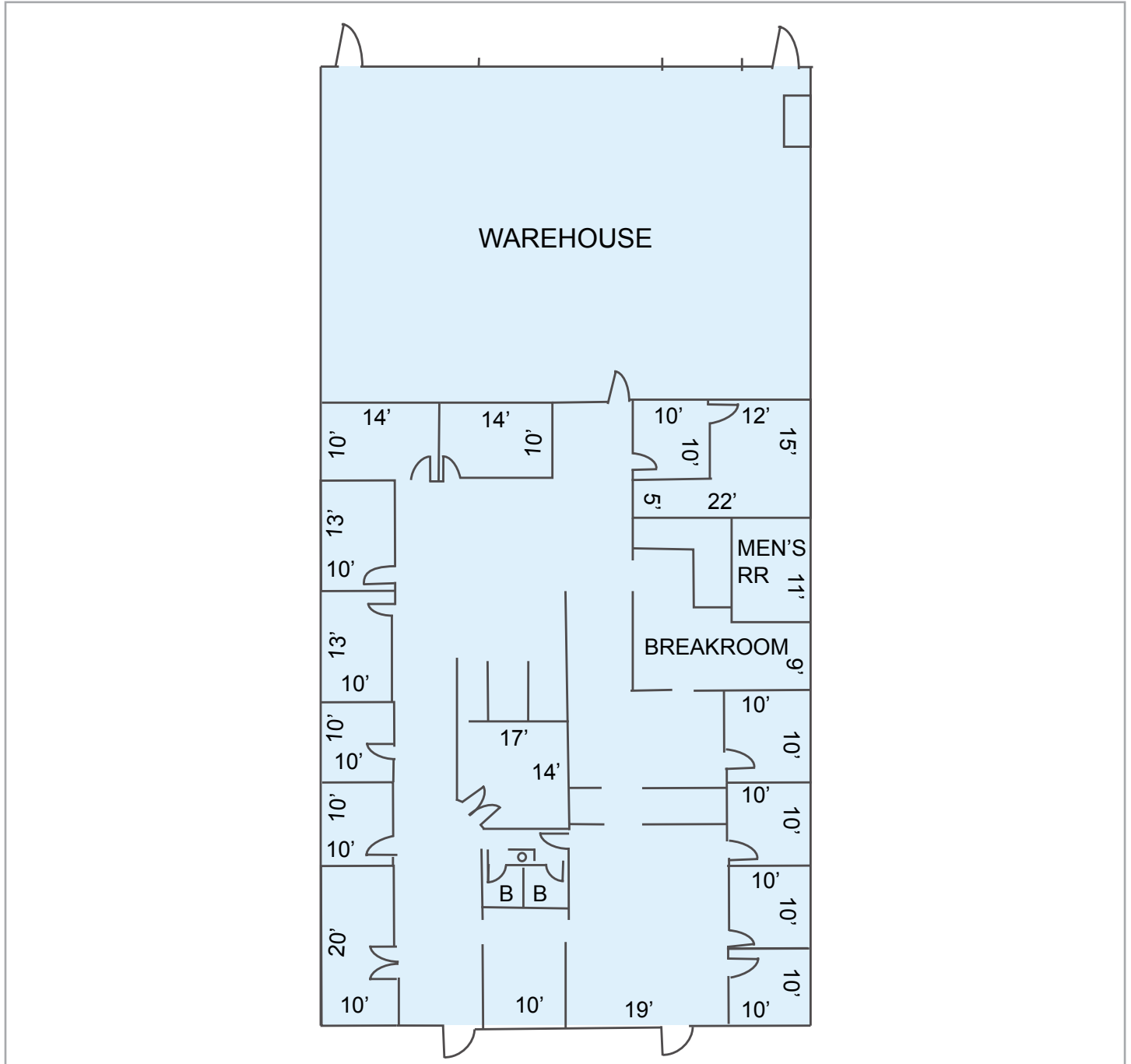
©2015 Ackerman & Co. All rights reserved. While we have no reason to doubt the accuracy of the information provided from sources we deem reliable, we cannot guarantee it and therefore assume no liability for errors, omissions or changes to this content.

# 1395 Cobb Parkway

Space Available: 7,200 SF

Marietta, GA 30060  
East Cobb

## FLOOR PLAN



WALTER BODEN, Senior Vice President

770.913.3928

wboden@ackermanco.net

www.ackermanco.com

# Ackerman & Co.

©2015 Ackerman & Co. All rights reserved. While we have no reason to doubt the accuracy of the information provided from sources we deem reliable, we cannot guarantee it and therefore assume no liability for errors, omissions or changes to this content.