

FOR LEASE



FLEXIBLE, HIGH-QUALITY OFFICE SPACE

SUGAR MILL OFFICE PARK

500 Sugar Mill Road | Atlanta, GA 30350

SPACE AVAILABLE | First Floor: Suite 170 3,441 SF
Second Floor: Suite 247 1,358 SF | Suite 250 1,634 SF | Suite 265 3,641 SF

HIGHLIGHTS

- Great Central Perimeter location at Roswell Road
- Below market rental rates
- Near numerous restaurants and retail
- 1 mile to Georgia 400 interchange at Northridge Road
- Recently renovated common areas
- Abundant parking: 106 spaces
- Lush landscaping, controlled park setting
- On-site management

JIMMY STEVENS | 770.913.3983 | JSTEVENS@ACKERMANCO.NET

©2022 Ackerman & Co. All rights reserved. While we have no reason to doubt the accuracy of the information provided from sources we deem reliable, we cannot guarantee it and therefore assume no liability for errors, omissions or changes to this content.

Ackerman & Co.
www.ackermanco.com

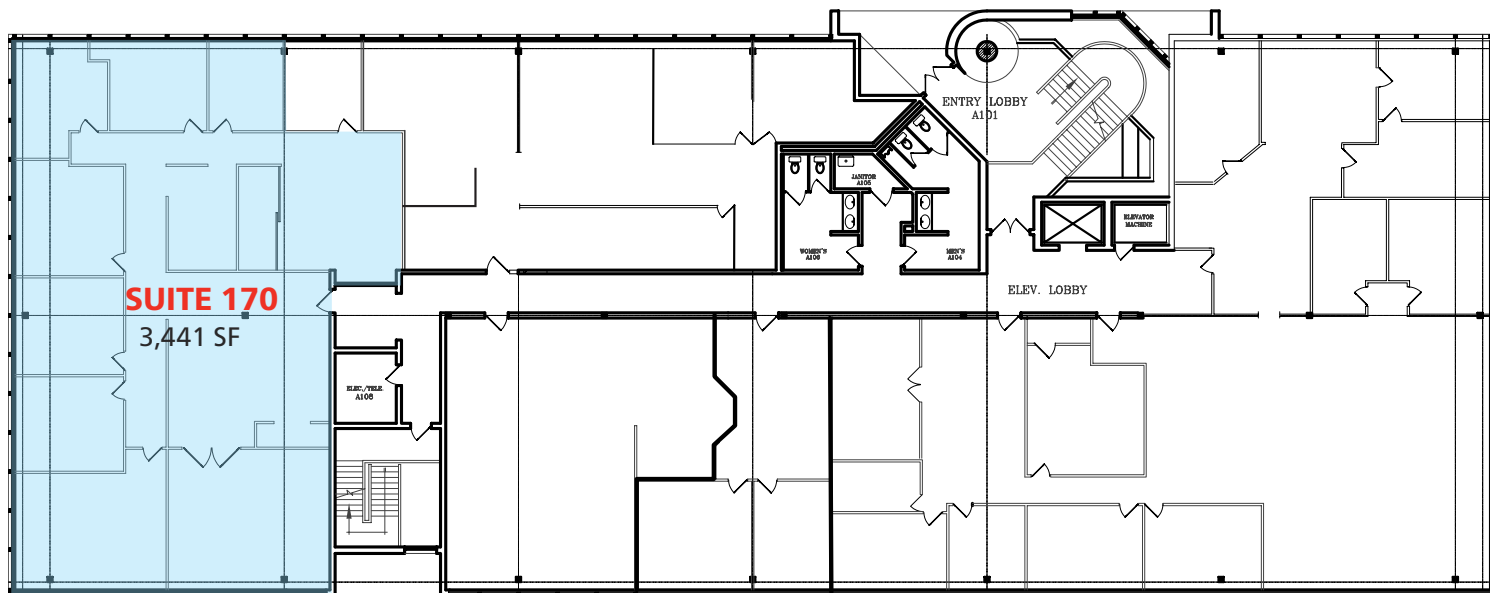
AERIAL VIEW

DEMOGRAPHICS (2022)

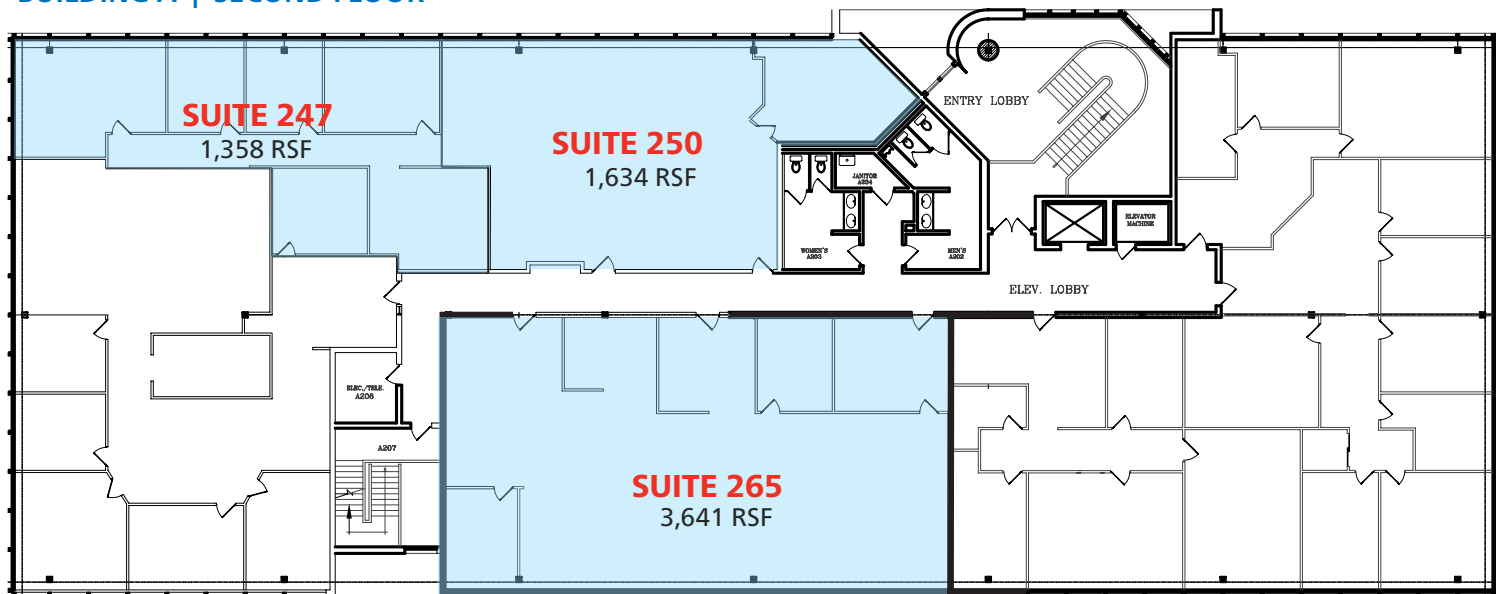
	3-MILE	5-MILE
Population	83,477	232,129
Number of Households	37,074	98,727
Avg. Household Income	\$135,313	\$142,825



BUILDING A | FIRST FLOOR



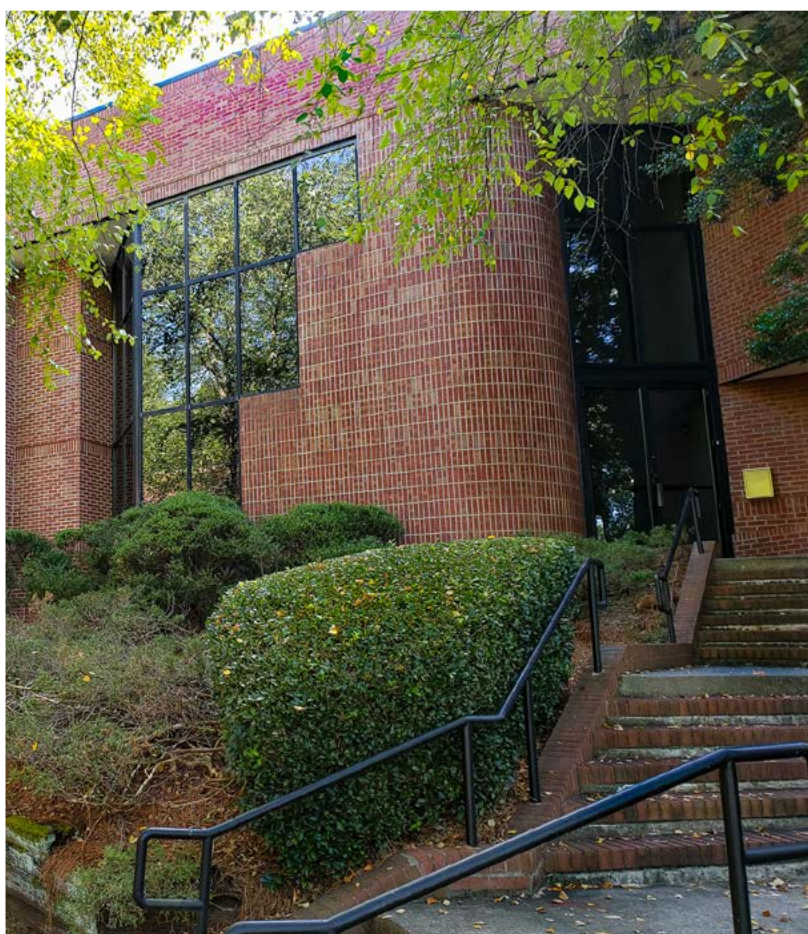
BUILDING A | SECOND FLOOR



AVAILABLE

AVAILABLE

PROPERTY PHOTOS



JIMMY STEVENS | 770.913.3983 | [JSTEVENS@ACKERMANCO.NET](mailto:jstevens@ackermanco.net)

©2022 Ackerman & Co. All rights reserved. While we have no reason to doubt the accuracy of the information provided from sources we deem reliable, we cannot guarantee it and therefore assume no liability for errors, omissions or changes to this content.

Ackerman & Co.
www.ackermanco.com